

Building a Resilient Tomorrow

Enhancing Climate Resiliency in Manhattan Community District 6



MANHATTAN
COMMUNITY BOARD 6

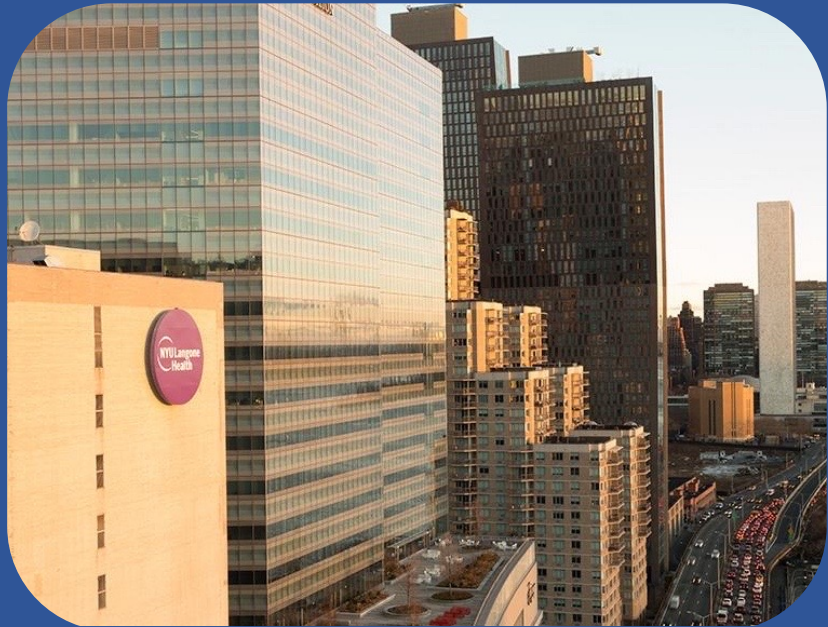
 FUND FOR THE CITY
OF NEW YORK
COMMUNITY PLANNING FELLOWSHIP

By : Saba Mahmood , Community Planning Fellow (2023-24)

Enhancing our ability to cope
with climate change.

**By effectively incorporating
innovative climate responsive
strategies.**

Medical Corridor



Transportation Hub



Global Landmarks



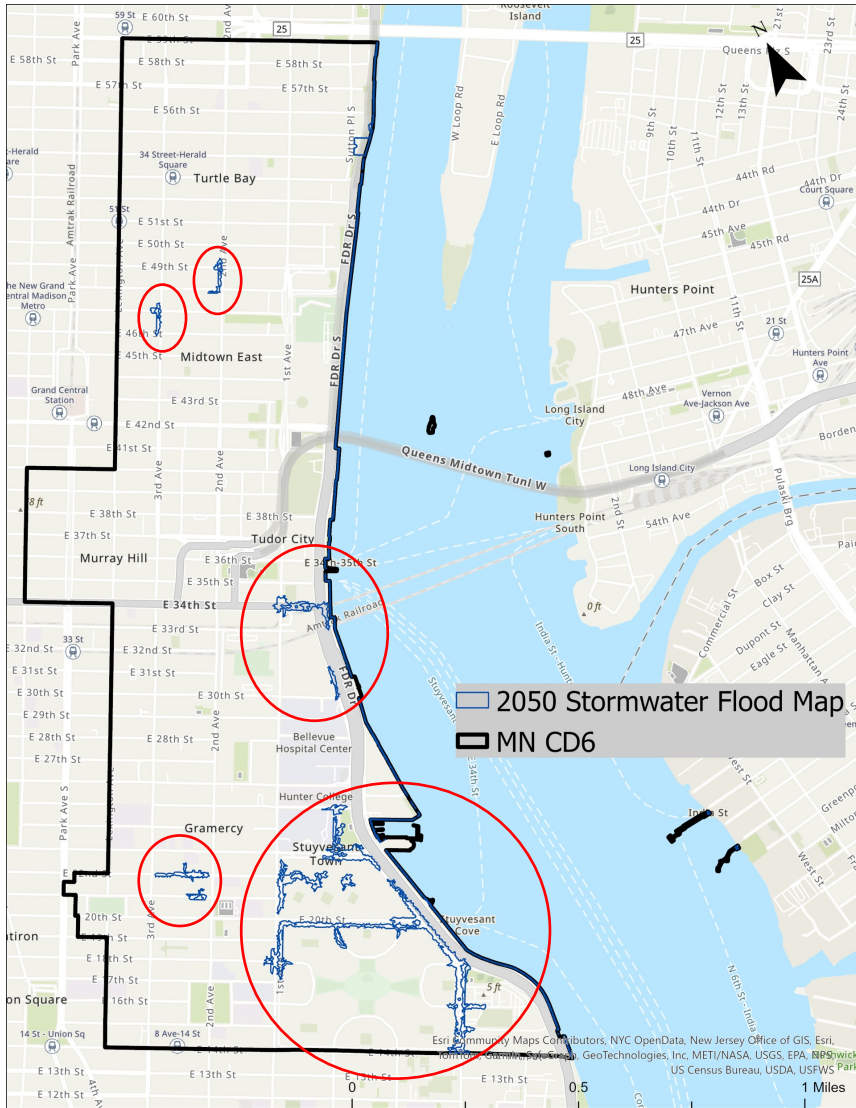
Presentation Overview

1. Our challenges
2. What is being done
3. What could also be done
4. Message for the community

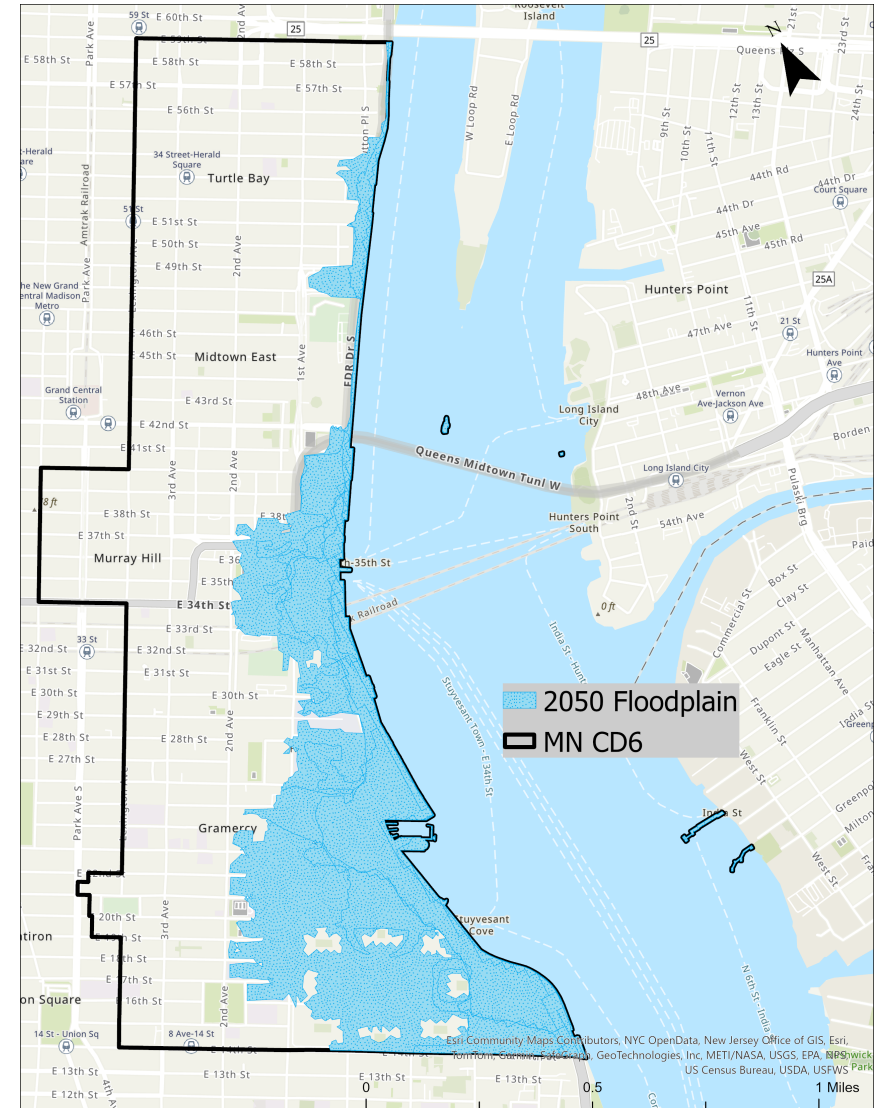


1. Our Challenges

Flooding

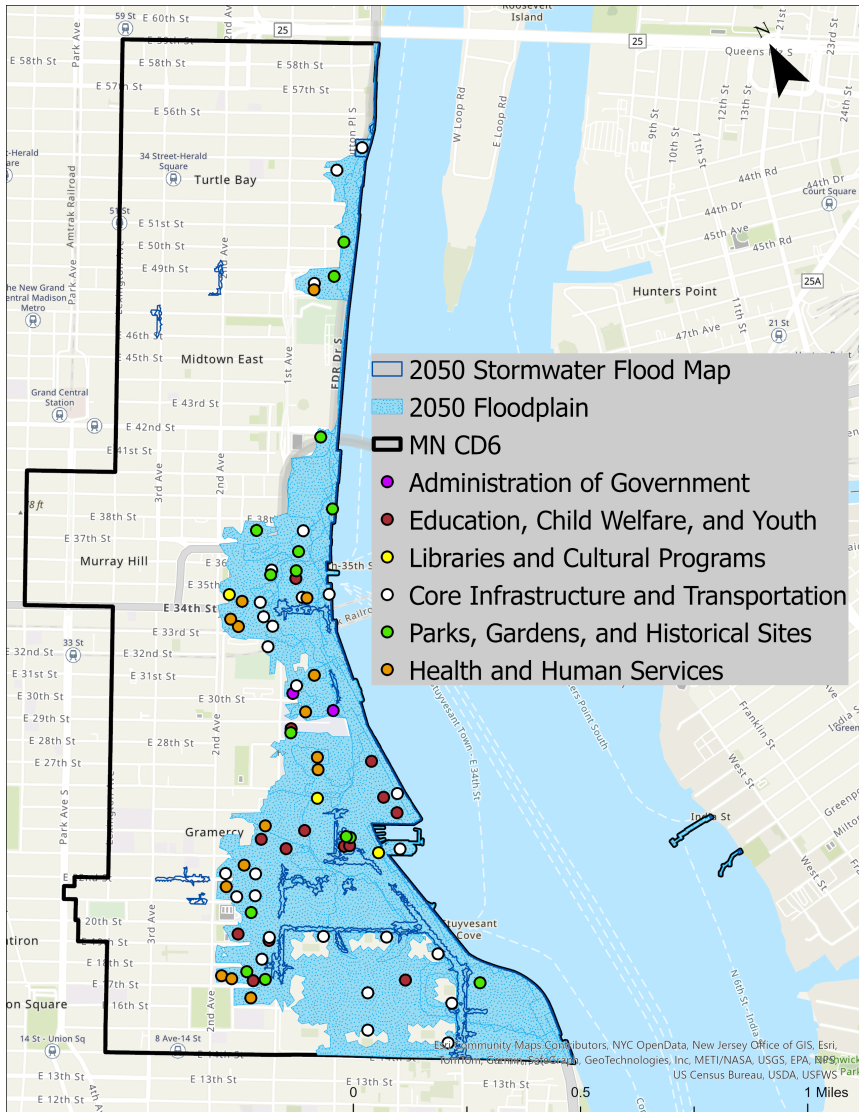


Stormwater Flooding Map 2050

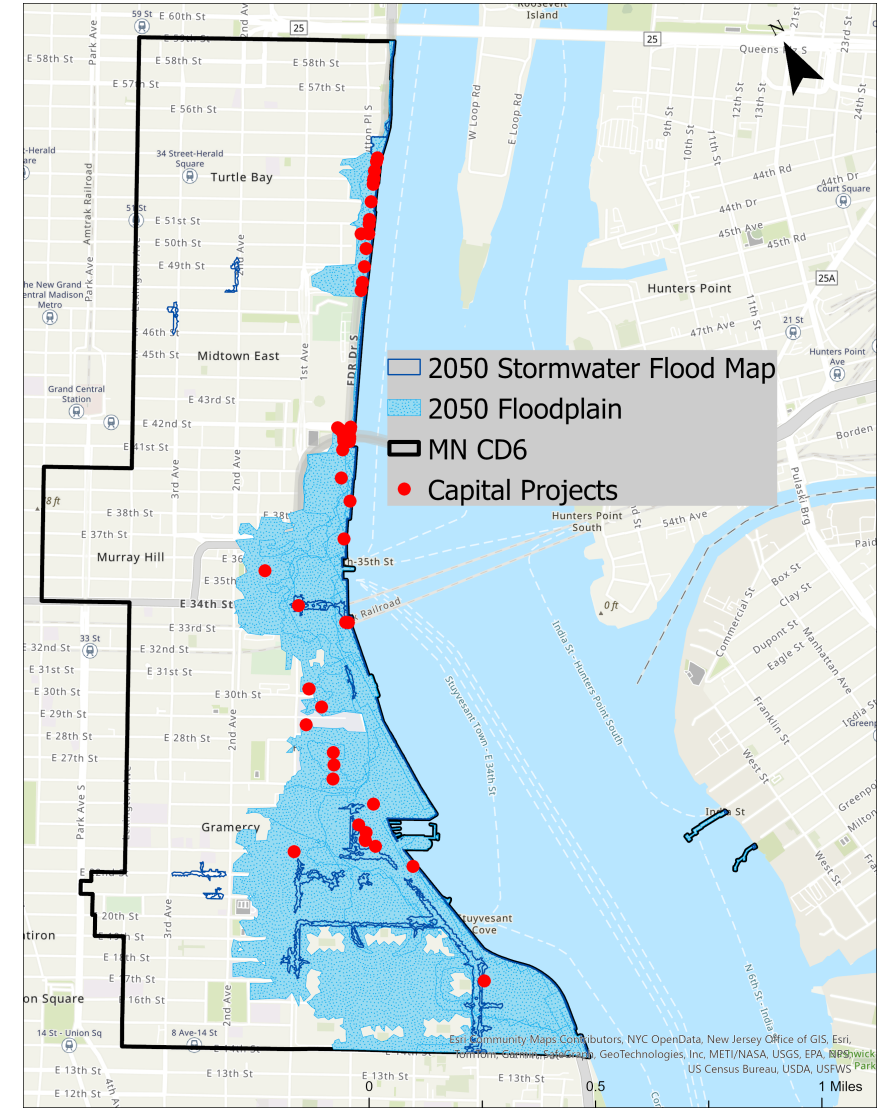


Coastal Flooding- Floodplain Map for 2050

Infrastructure in flood prone areas

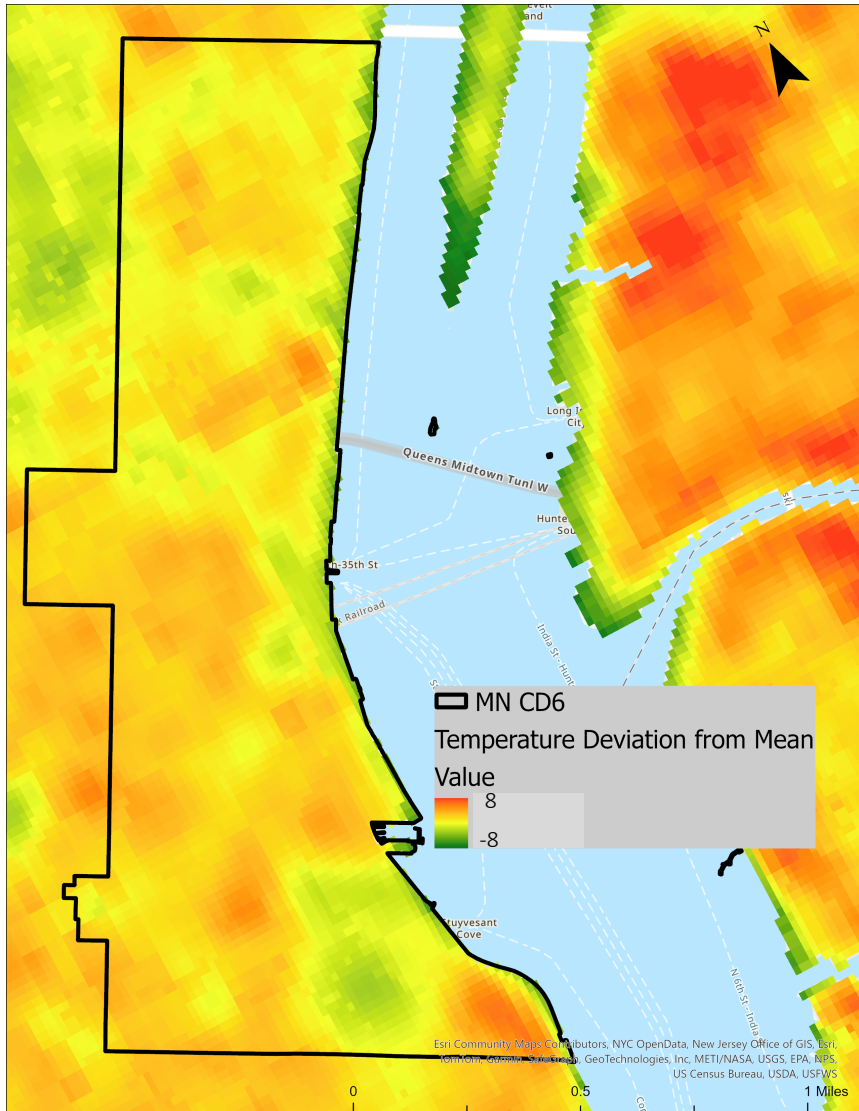


Facilities in flood prone areas



Capital project in flood prone areas

Heat



Temperature Deviation from Mean

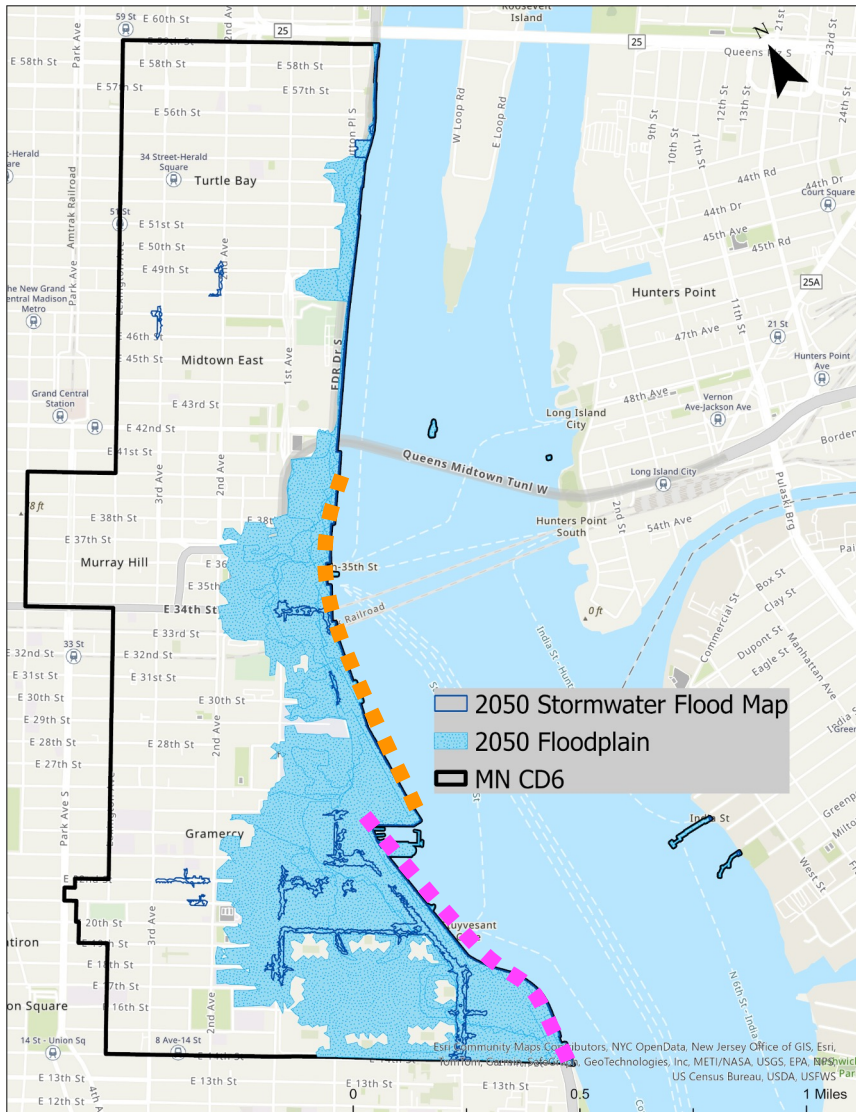
Lowest tree coverage
in NYC

1% of park land

No publicly accessible
community gardens

2. What's being done

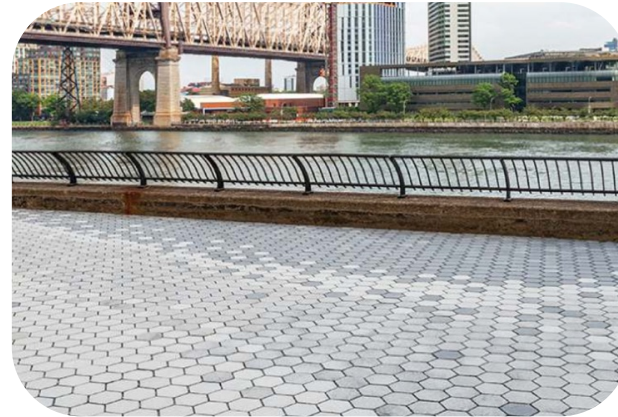
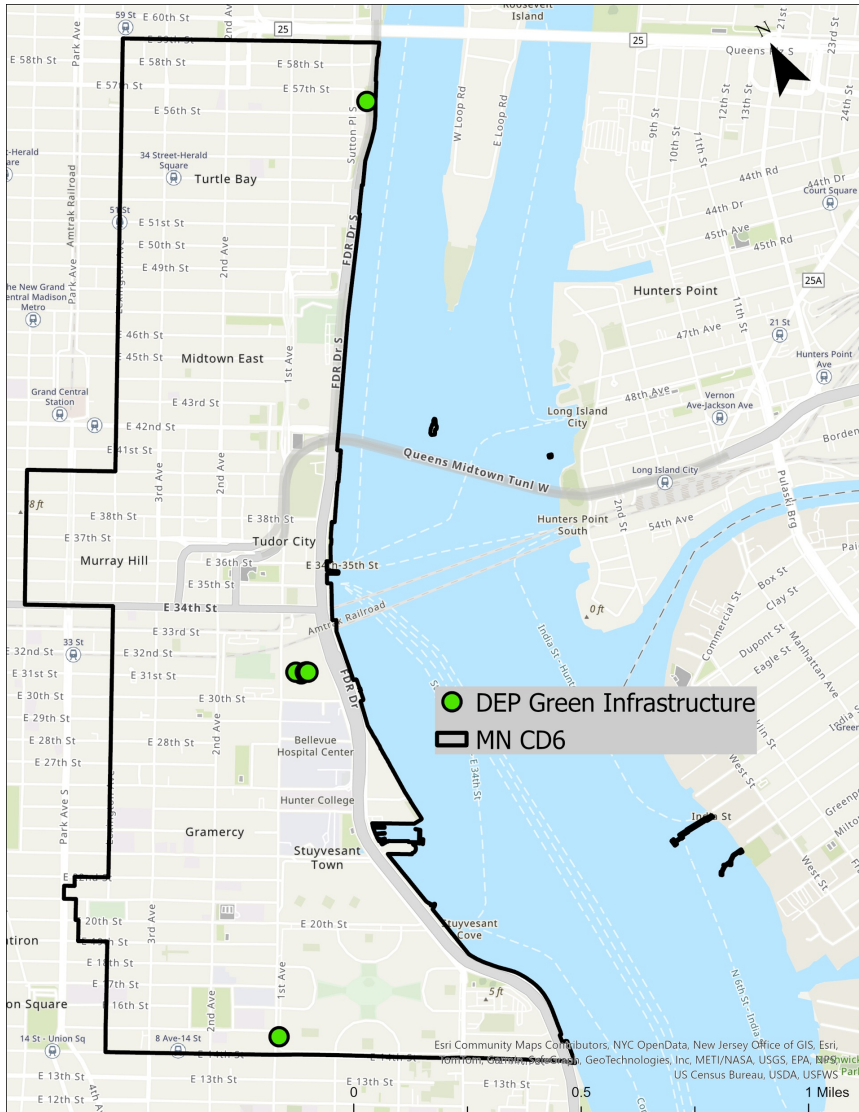
Large-scale climate resiliency projects



NY&NJ HATS Proposal

ESCR Project

DEP Green Infrastructure



Permeable pavers

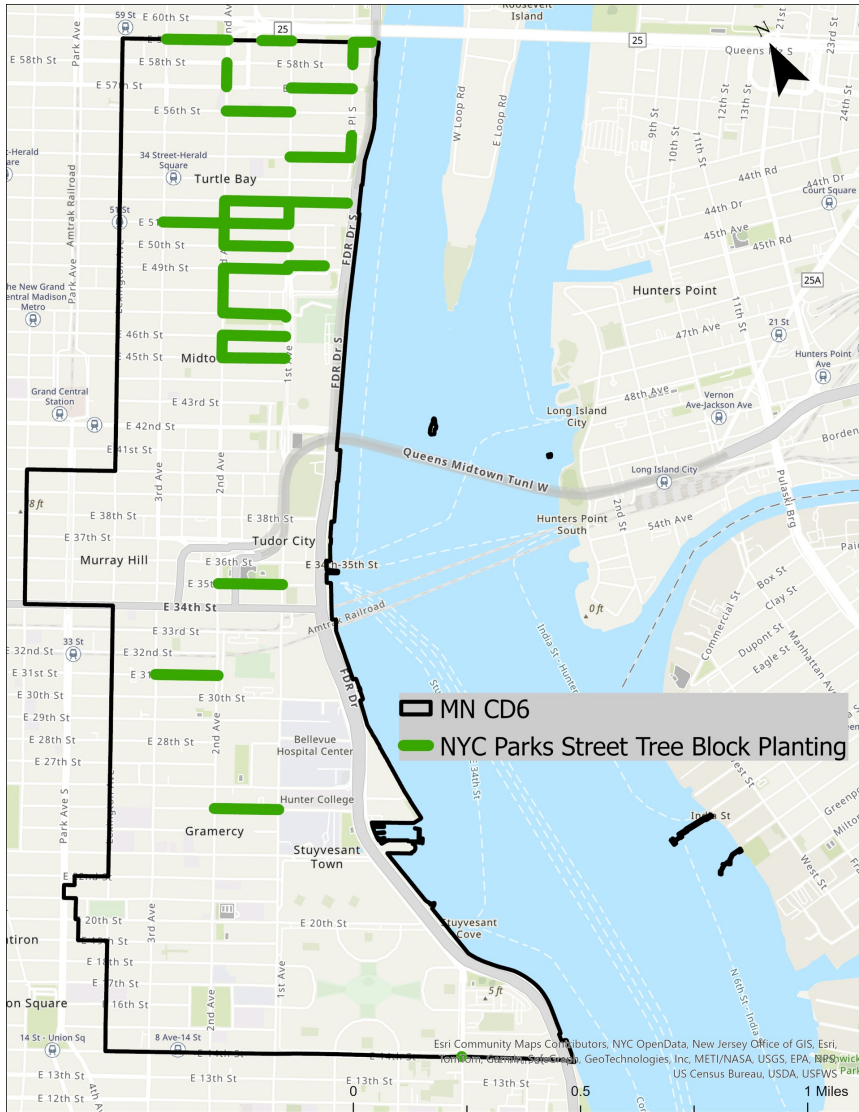


Roof gardens



Rain gardens

NYC Parks Street Tree Block Planting



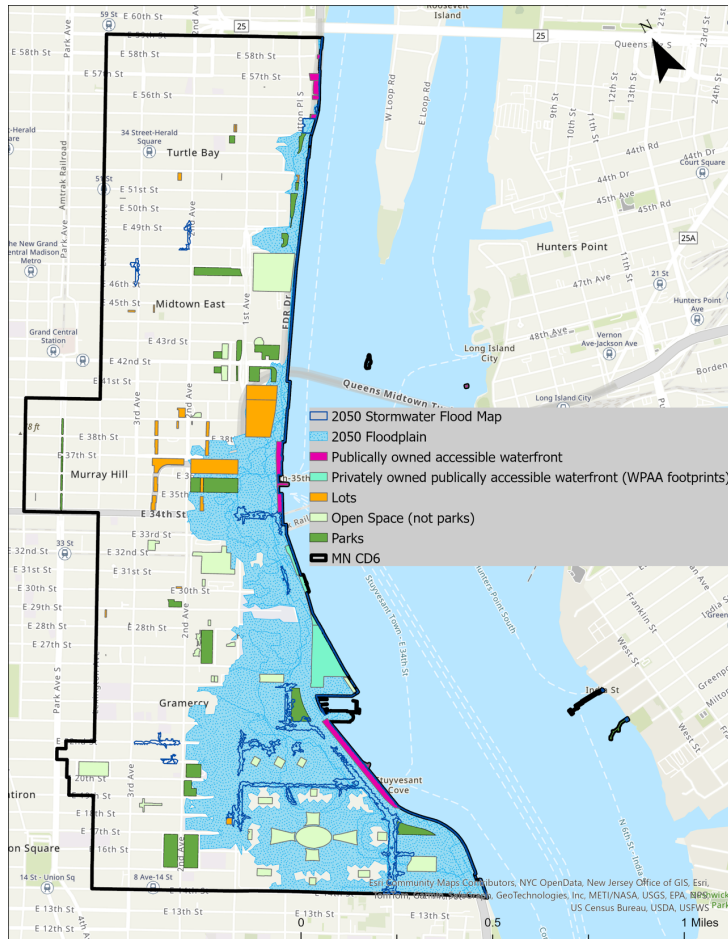
East 51st St.



East 49th St.

3. What can be done

Potential sites



Increase overall vegetation



Install permeable pavers

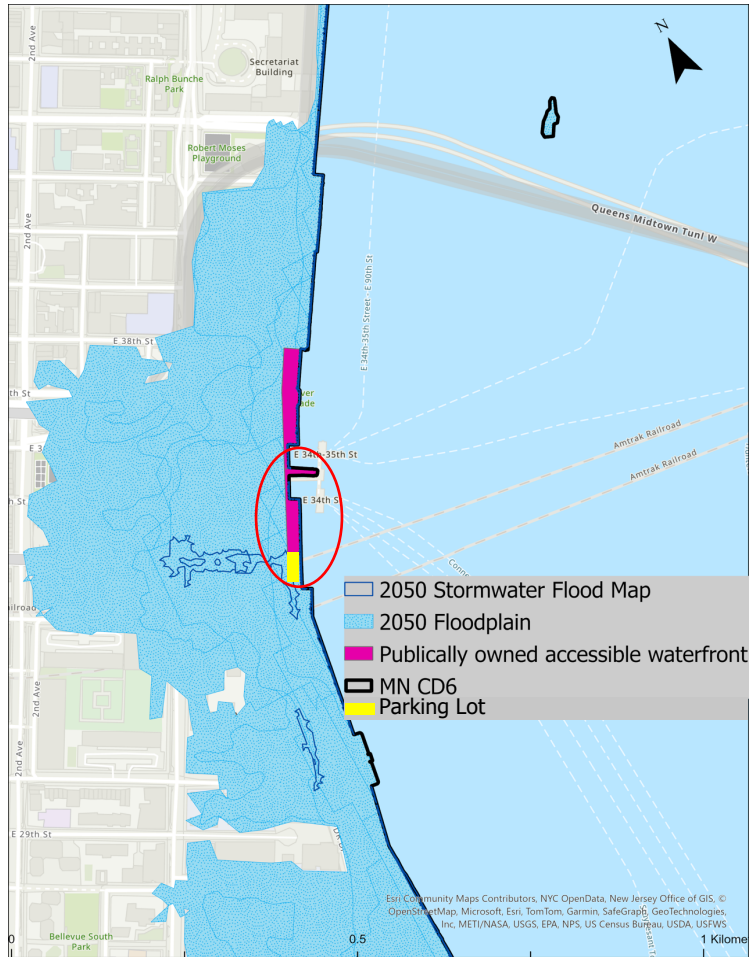


Car's Park 2.0 by Studio NAB, France



Matunga Park, Mumbai

Potential sites for immediate action



Aerial View



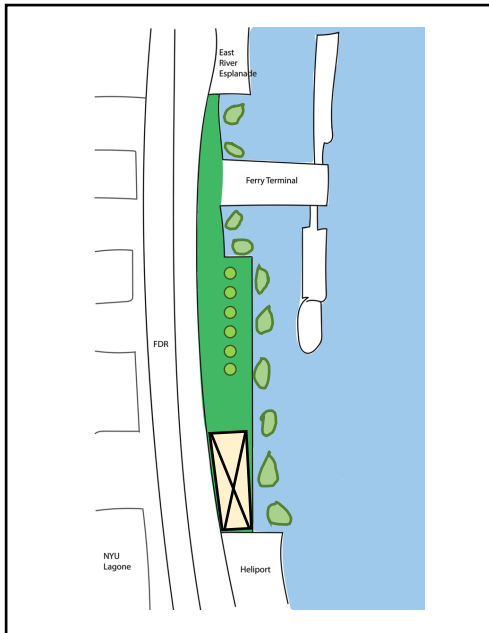
Parking lot at 34th St.



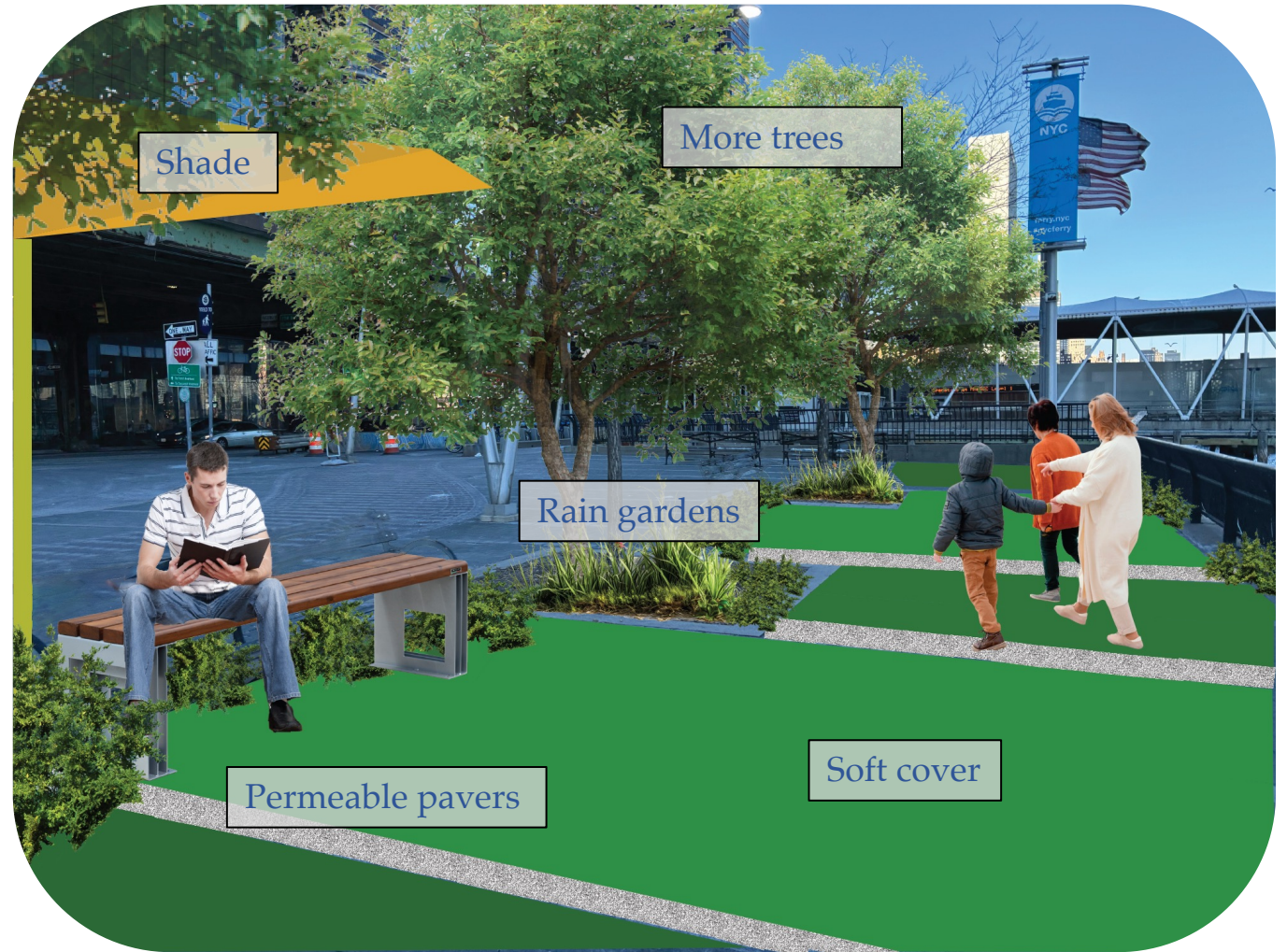
Waterfront between 34th and 35th St.

The Resilient Park

Increasing vegetation and permeability



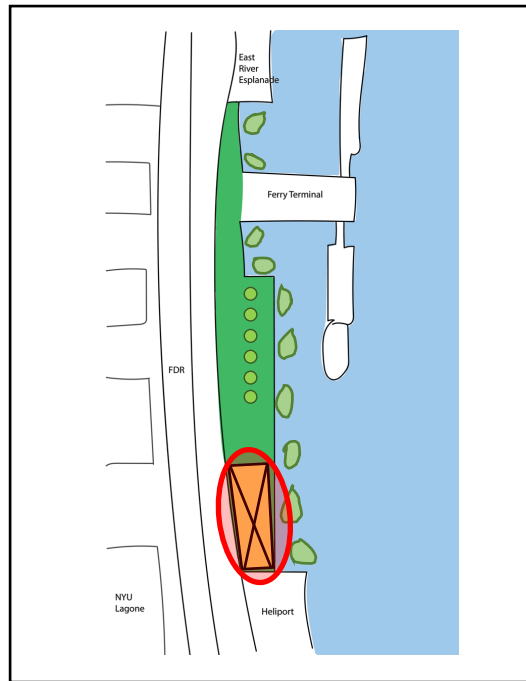
Plan



Concept Visualization

The Resilient Park

Parking lot as a water plaza



Plan

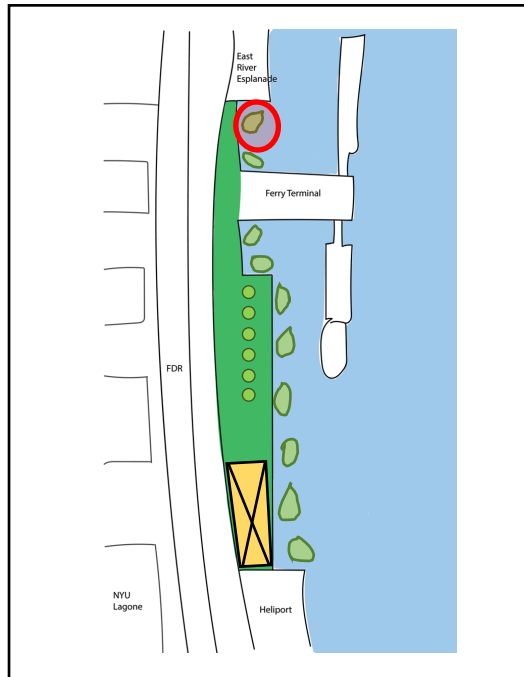


Waterplein, Rotterdam



The Resilient Park

Creating floating islands



Plan



Floating Islands



Parkipelago by Marshall Blecher and Studio Fokstrot, Copenhagen

4. Message for the Community



MANHATTAN COMMUNITY BOARD 6



TAKE ACTION!

Promote!

Encourage!

Ensure!

Build
knowledge!

Stay
informed!

Participate!



Thank You!

Contact info:

Saba Mahmood
smahmo10@pratt.edu

