



Parks

The Reconstruction of the Playground in St. Vartan Park

Located at 1st Avenue Between East 35th and East 36th Street,
Borough of Manhattan

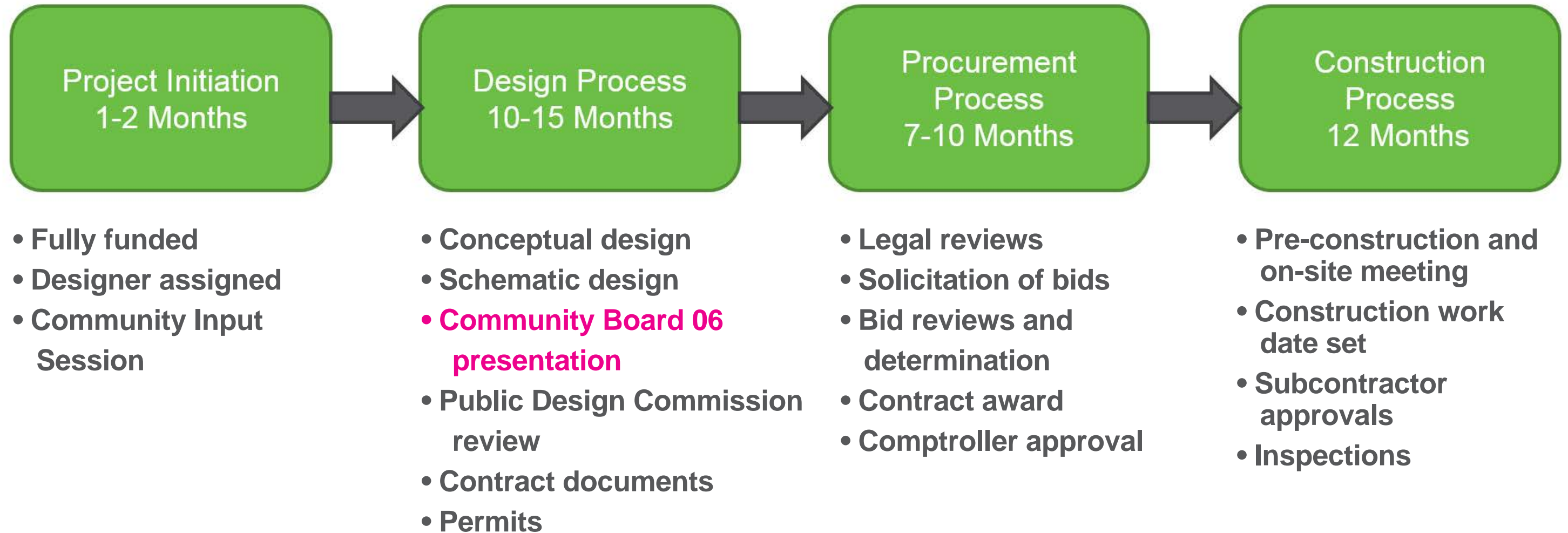
Community Board 6 - Parks, Landmarks, & Cultural Affairs Committee
September 01, 2020
Benjamin Nicolosi-Endo, NYC Parks

Total Budget: **\$4.49m**
City Council District 4, Keith Powers - \$1.31m FY20
Mayor, Bill de Blasio - \$3.18m FY18

Project Size: **0.5 ac**

Typical Project Timeline

The timeline for a capital project is between 30-45 months.



Goals

- Provide flexible space for active play.
- Upgrade amenities to increase comfort on site.
- Add play opportunities for different age groups.
- Establish a safer site to attract park users.



City

2 MI



St. Vartan Park

Neighborhood - Murray Hill

1000 FT



Site

100 FT



NYC Parks

ST VARTAN PARK | Project Location





Base Flood Elevation (BFE): 2-3.9ft above grade (A-Zone)

Flood Hazard Zones

2015 Preliminary Flood Insurance Rate Map

- V Zone (100-year floodplain subject to wave action)**
Areas along coasts subject to inundation by the 1% annual chance flood event with additional hazards associated with storm-induced waves.
- A Zone (100-year floodplain)**
Areas subject to inundation by the 1% annual chance flood event.
- Shaded X Zone (500-year floodplain)**
Areas within the 0.2% annual chance floodplain, areas of 1% annual chance flooding where average depths are less than 1 foot, areas of 1% annual chance flooding where the contributing drainage area is less than 1 square mile, and areas protected from the 1% annual chance flood by a levee.
- Limit of Moderate Wave Action (LiMWA)**
The inland limit of the area expected to receive 1.5ft or greater breaking waves during the 1% annual chance flood event. Data from 2015 PFIRMs.

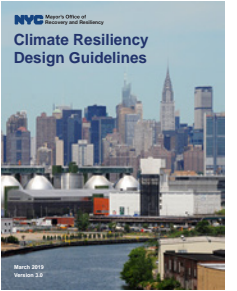
Future Floodplain 2050s

- Future 1% Annual Chance Floodplain (100-year)**
- Future 0.2% Annual Chance Floodplain (500-year)**

Further Information:



NYC Parks: Design and Planning for Flood Resiliency

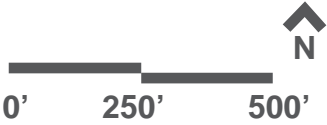


NYC MOR: Climate Resiliency Design Guidelines (v3.0)

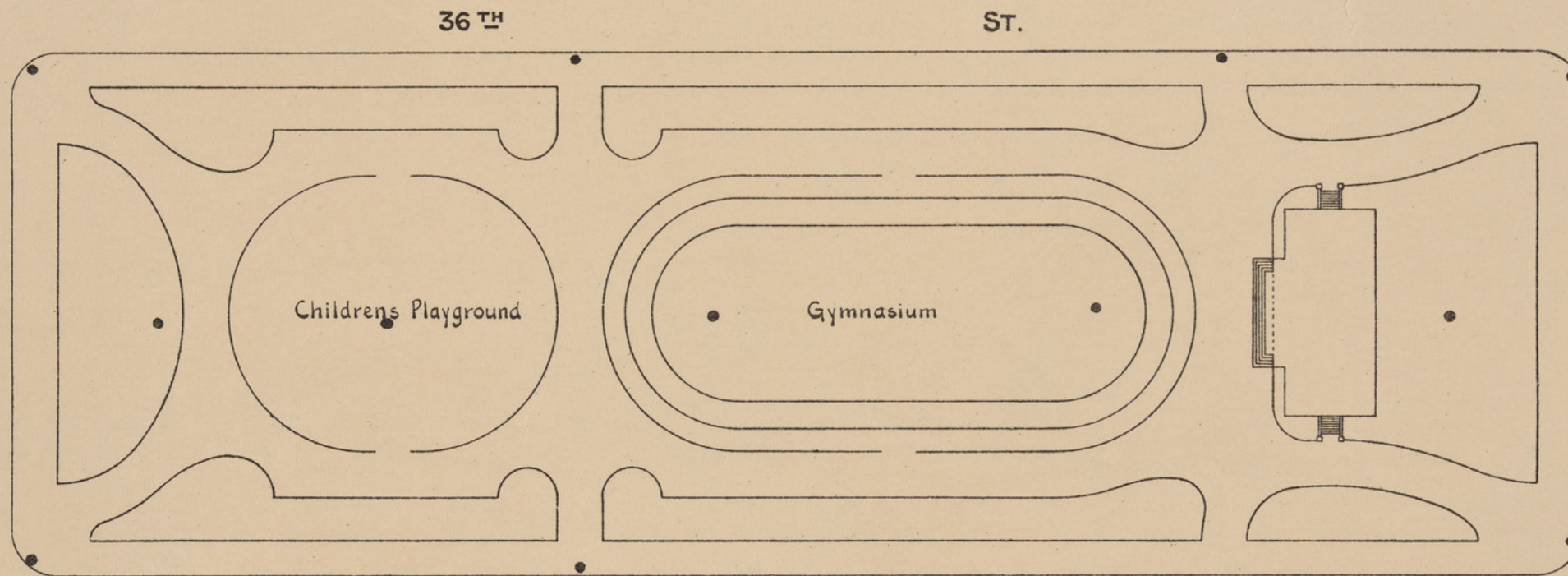


NYC Parks

ST VARTAN PARK | Flood Risk



ORIGINALLY NAMED, ST. GABRIEL'S PARK



Scale, 20' = 1".

0 10 20 30 40 50 60 70 80 90 100 ft.

Scale of feet.

PARK between 35th and 36th Sts., 1st & 2nd Ave's.

Sam Parsons
Landscape Architect, D. P.



WESTERN PORTION OF PARK - LOOKING NORTH



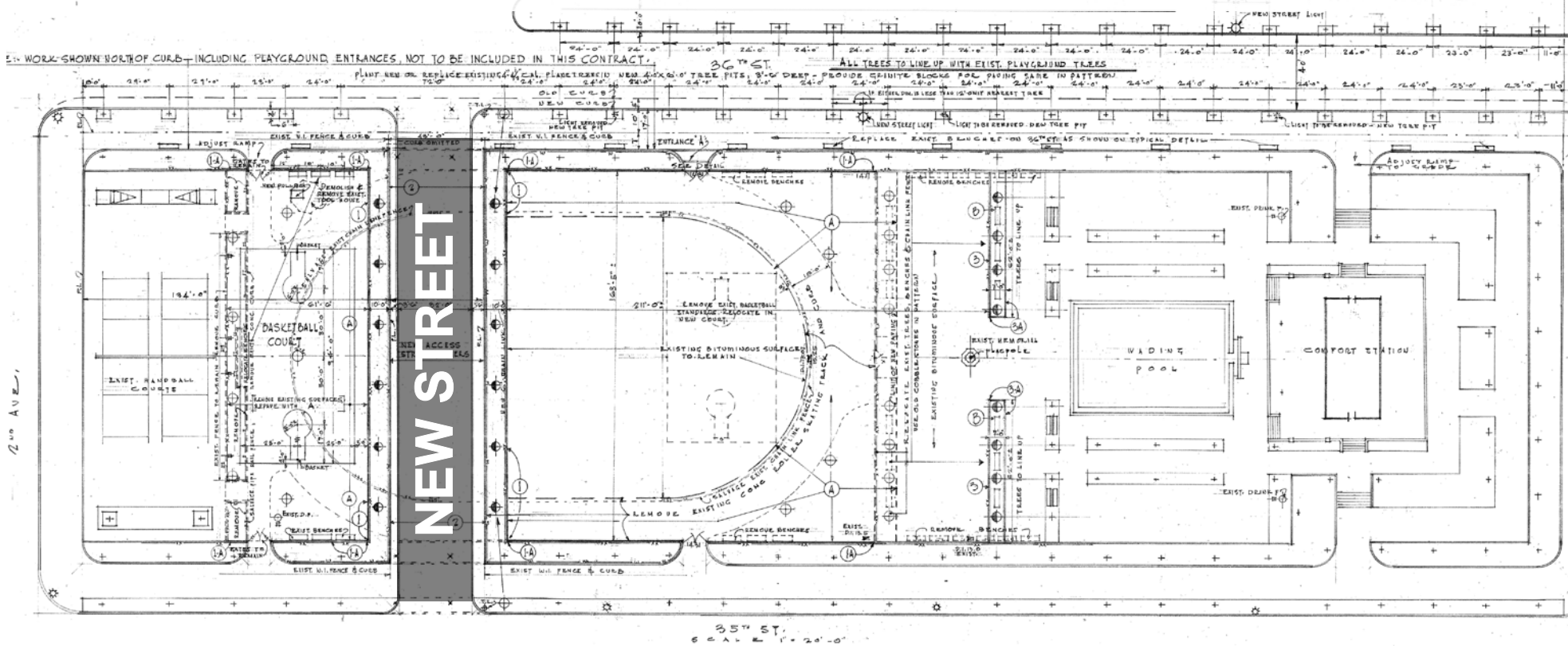
EASTERN PORTION OF PARK - LOOKING NORTH



NYC Parks

ST VARTAN PARK | Park Layout, 1914

CONSTRUCTION OF QUEENS MIDTOWN TUNNEL NEW STREET ACCESS TO TUNNEL THROUGH PARK



WESTERN PORTION OF PARK - LOOKING NORTH

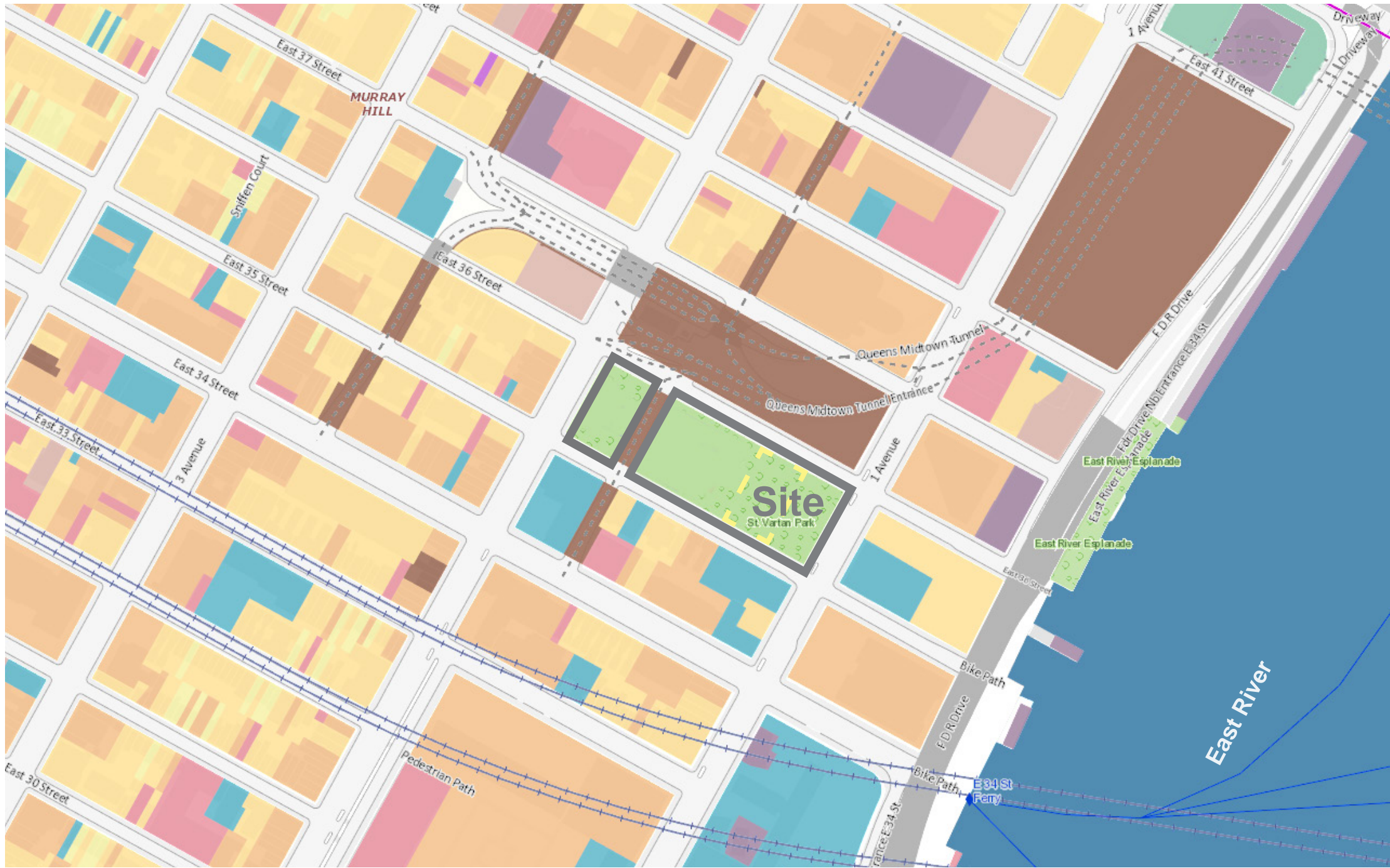


CENTRAL PORTION OF PARK - LOOKING NORTH



NYC Parks

ST VARTAN PARK | Plan For A New Street Through The Park, 1940



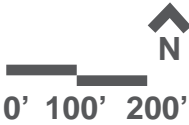
Land Use Categories

- 1 And 2 Family Residential
- Multi-Family Residential
- Mixed Use
- Open Space And Outdoor Recreation
- Commercial
- Institutional
- Industrial
- Parking
- Transportation / Utilities
- Vacant Lots



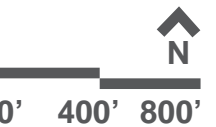
NYC Parks

ST VARTAN PARK | Surrounding Land Use

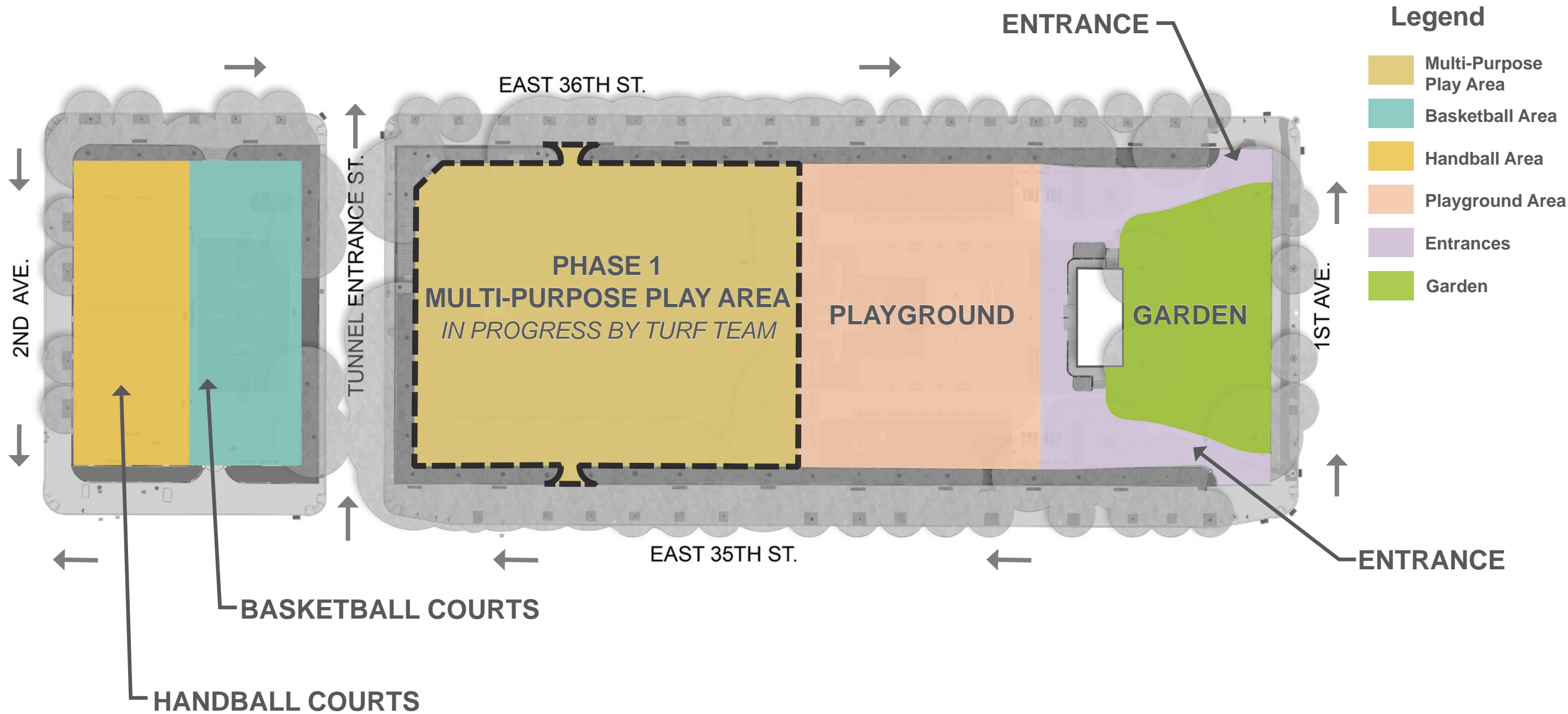




ST VARTAN PARK | Neighborhood Context

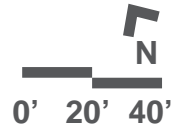


QUEENS MIDTOWN TUNNEL ENTRANCE →

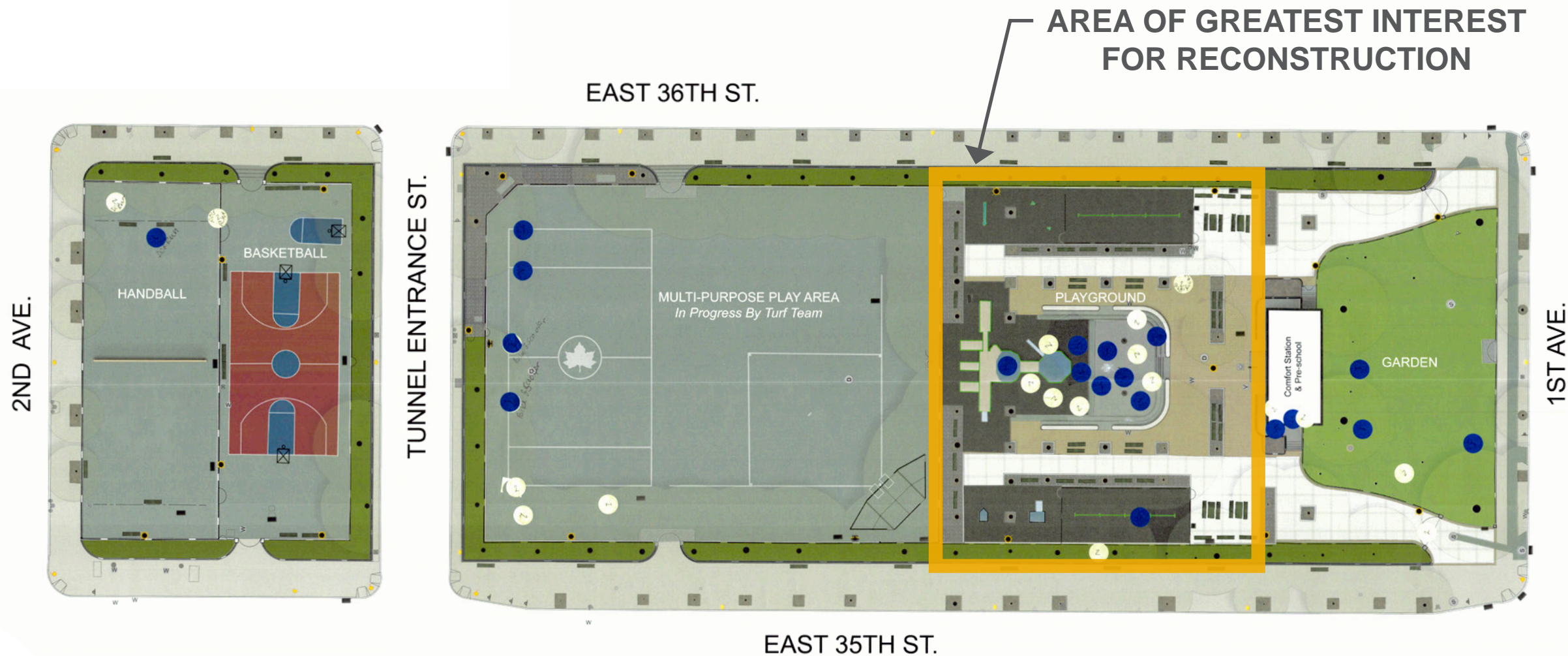


Legend

- Multi-Purpose Play Area
- Basketball Area
- Handball Area
- Playground Area
- Entrances
- Garden







Community members placed stickers to indicate desired areas for reconstruction.
Blue = First Choice. White = Second Choice.

More Trash Bins
More Swings
Climbing Structures
Picnic Tables
Bike/Scooter Track
Safer Spray Shower
Less Exits
Senior Seating
Open Garden
Separate Play Zones



QUEENS MIDTOWN TUNNEL ENTRANCE →

EAST 36TH ST. →

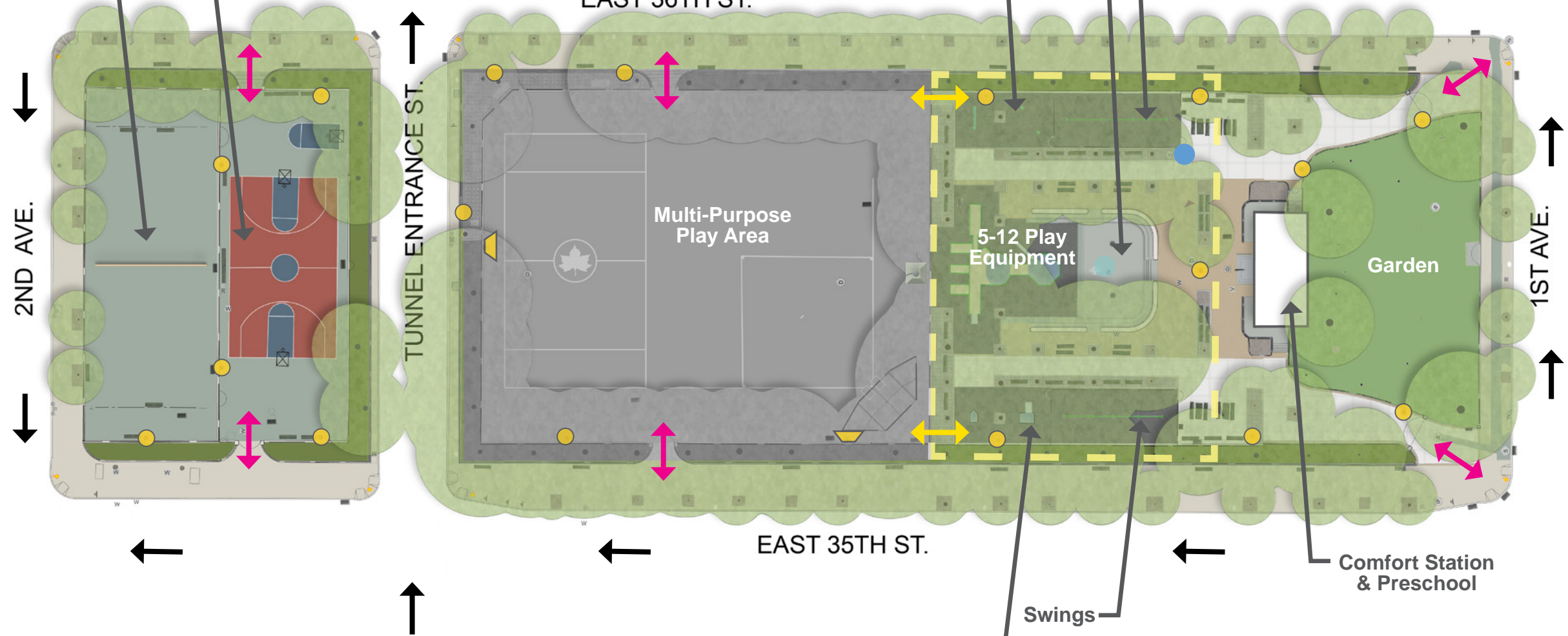
EAST 35TH ST. ←

Basketball
Handball

TUNNEL ENTRANCE ST. ↑

2ND AVE. ↓

1ST AVE. ↑

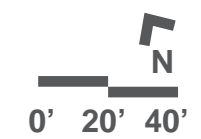


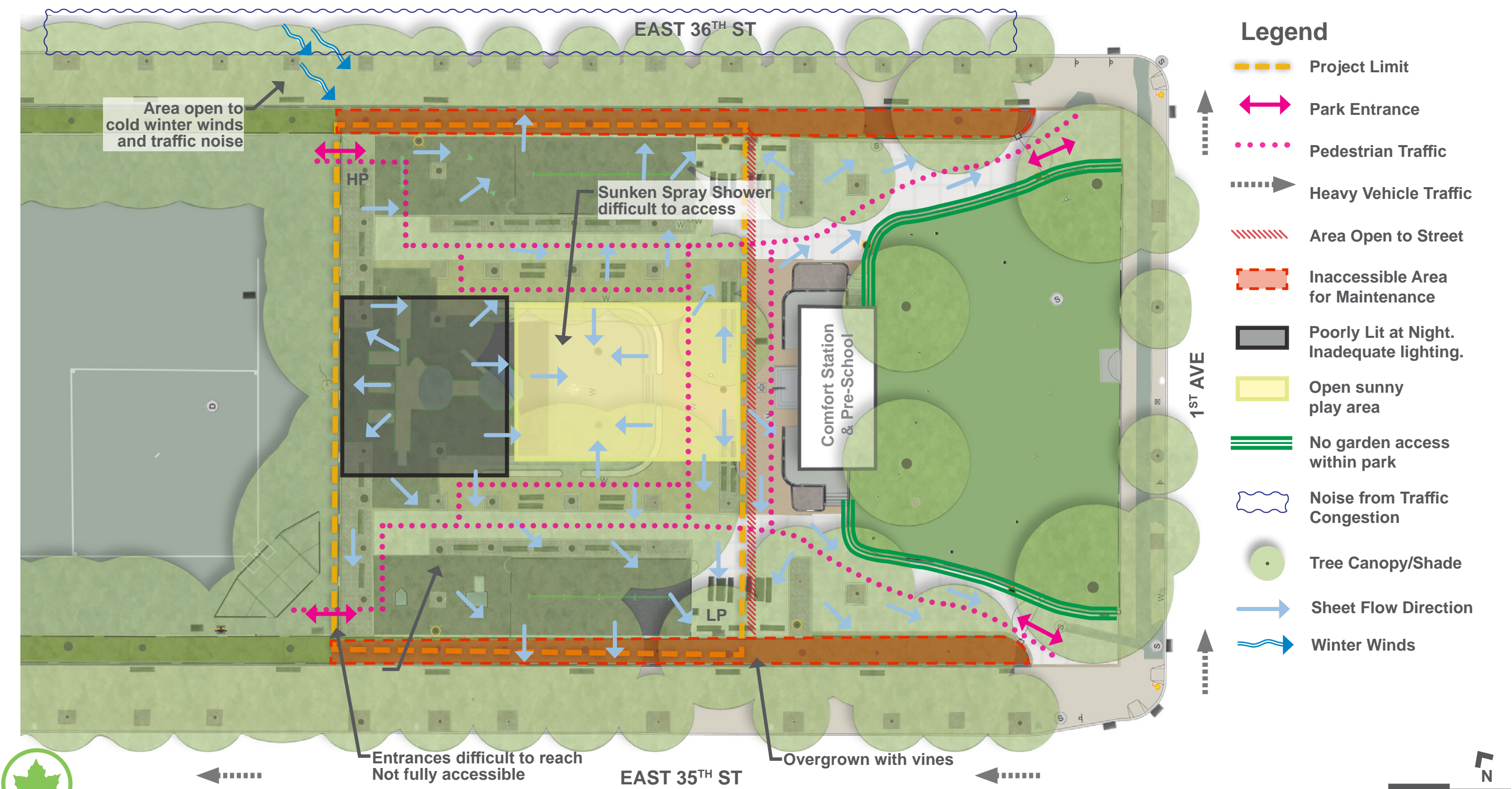
Legend

- ↔ Park Entrance
- ↔ Multi-Purpose Play Area Entrance
- ▭ Building
- ▭ Concrete Pavement
- ▭ Asphalt Pavement
- ▭ Safety Surface
- ▭ Sidewalk
- Tree
- Parks Lightpole
- ▲ Sports Lighting
- Drinking Fountain
- Spray Shower
- ▭ Flagpole
- ← Traffic

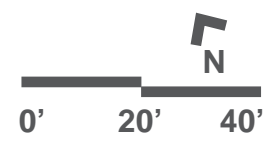


ST VARTAN PARK | Existing Conditions





ST VARTAN PARK | Site Analysis



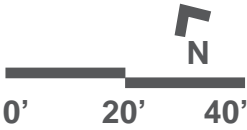


Legend

- Canopy
- Structural Root Zone
- Critical Root Zone
- Stump Removal
- Tree Removal due to poor condition



ST VARTAN PARK | Tree Inventory





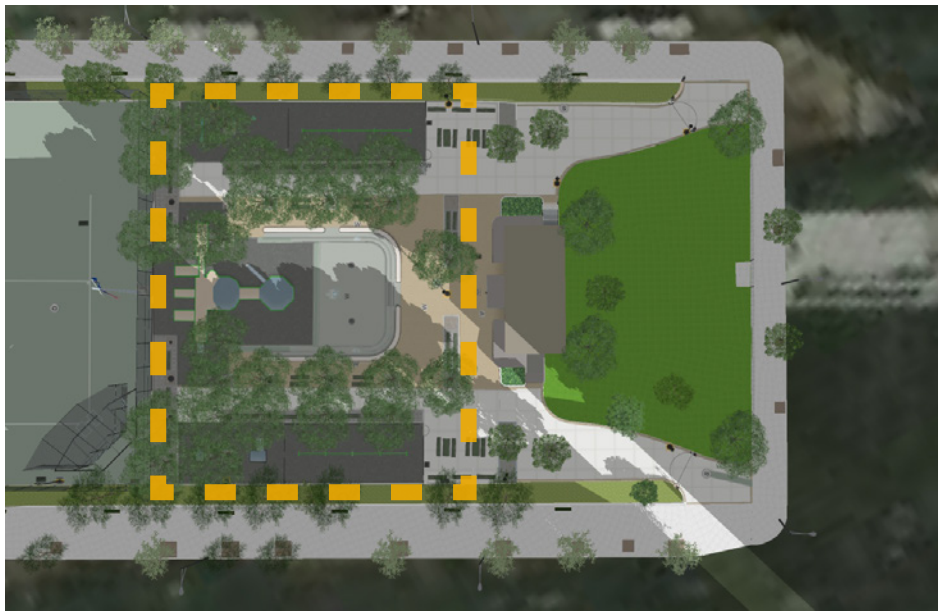
SUMMER MORNING - 8:00 AM



SUMMER AFTERNOON - 1:00 PM



SUMMER AFTERNOON - 5:30 PM



WINTER MORNING - 10:30 AM



WINTER AFTERNOON - 12:30 PM



WINTER AFTERNOON - 2:30 PM





1 PLAYGROUND UNIT

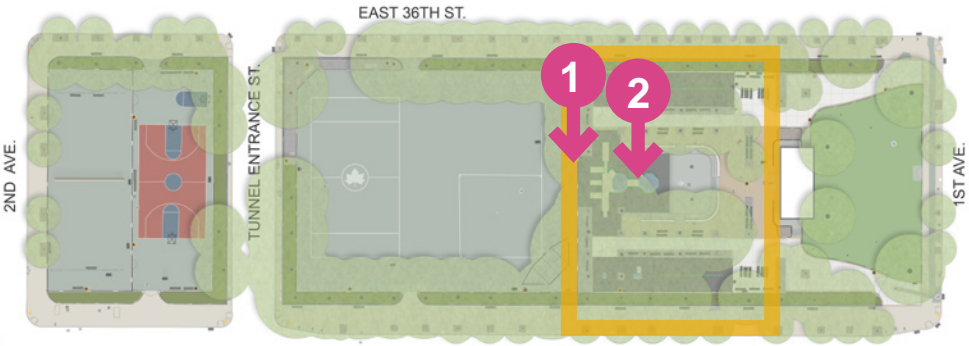


2 PLAYGROUND UNIT



NYC Parks

ST VARTAN PARK | Site Photos



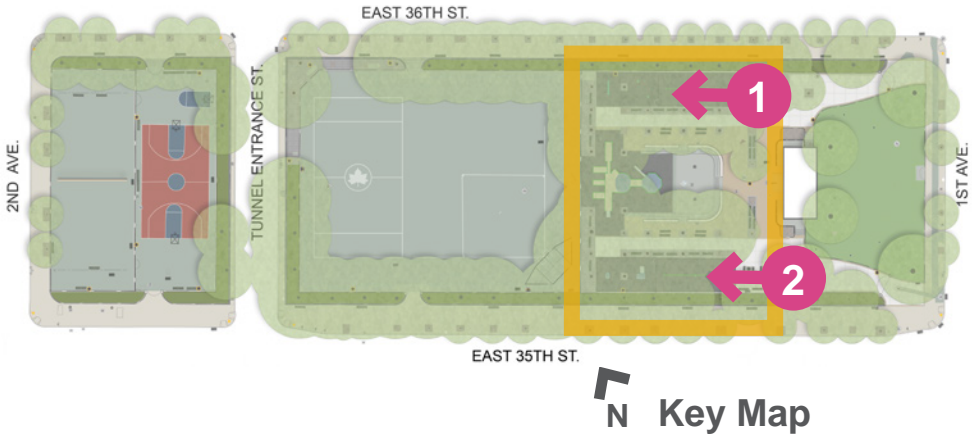
N Key Map



1 NORTH SIDE SWINGS IN PLAYGROUND



2 SOUTH SIDE SWINGS IN PLAYGROUND





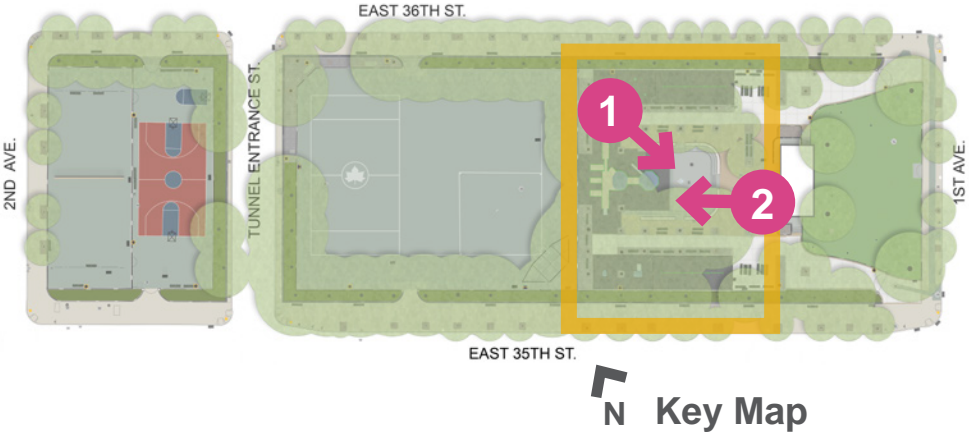
1 SPRAY SHOWER



2 SPRAY SHOWER



ST VARTAN PARK | Site Photos

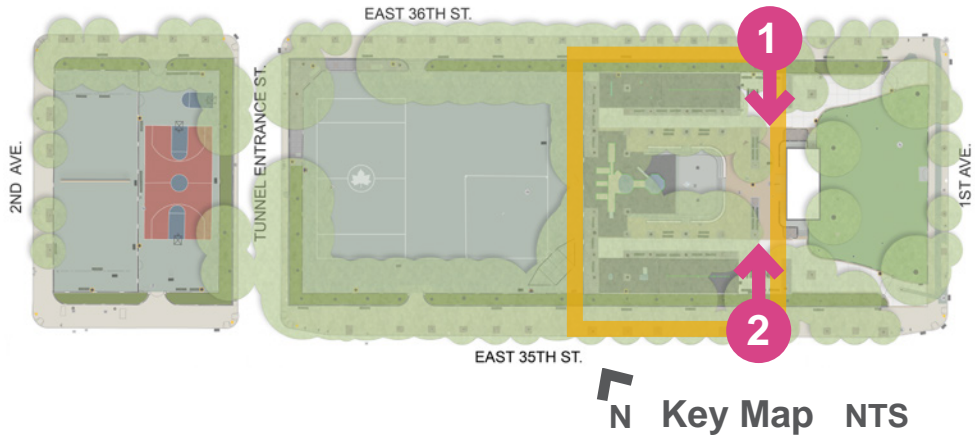




1 PATHWAY IN FRONT OF PRE-SCHOOL / COMFORT STATION



2 PLAYGROUND FROM EAST 35TH STREET





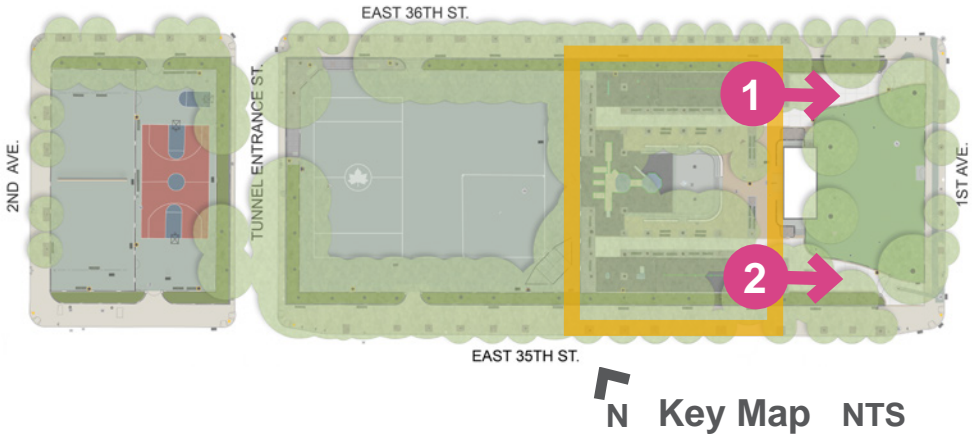
1 NORTHEAST ENTRANCE AT 1ST AVENUE



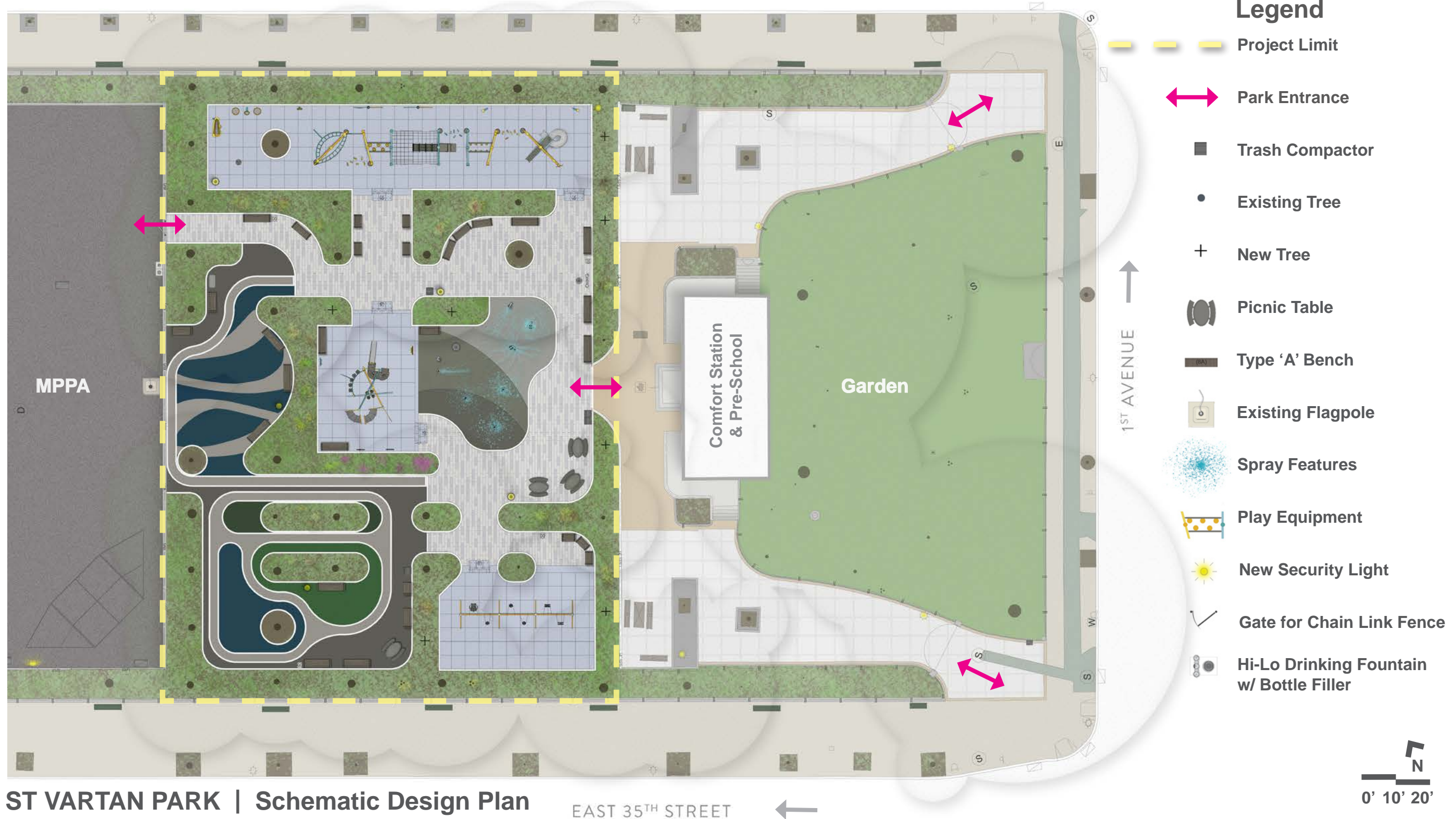
2 SOUTHEAST ENTRANCE AT 1ST AVENUE



ST VARTAN PARK | Site Photos



ST VARTAN PARK | Schematic Design Plan



Play Area, Ages 5-12

Security Lighting

Entrance to MPPA

Bottle Filler

Seating Area

Play Area, Ages 2-5

Security Lighting

Bike/Scooter Track Area

Bike/Scooter Track Area

Security Lighting

Seating Area

Play Area, Ages 5-12

Plant Bed Buffer
w/ New Trees

Seating Area

Hi-Lo Drinking Fountain

Spray Shower

New Central Playground Entrance

Trash Compactor

Accessible Picnic Tables

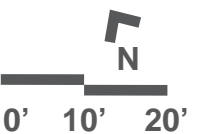
Security Lighting

Seating Area

Swings, 7'-0"Ht
2 Strap, 3 Bucket, 1 Accessible Seat

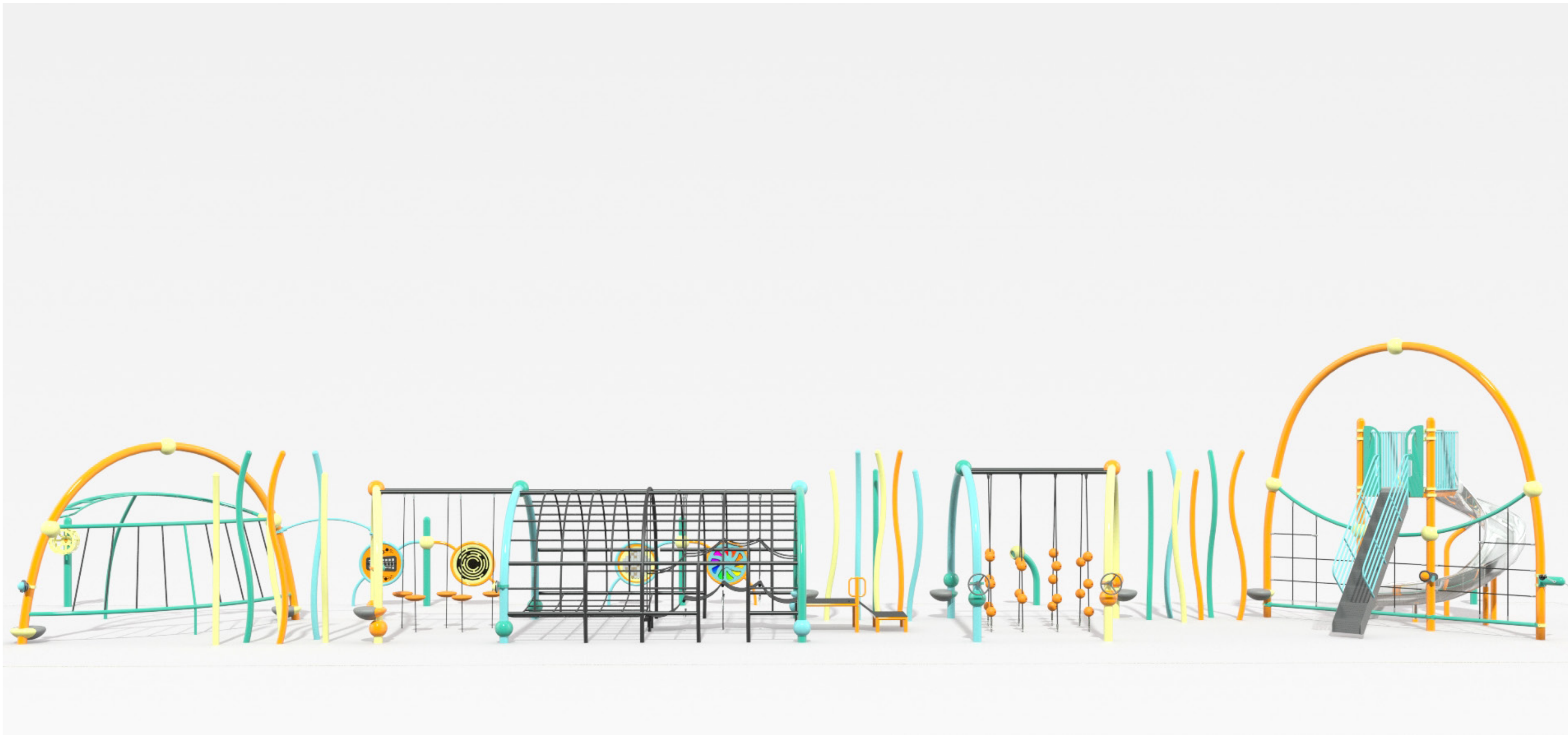


ST VARTAN PARK | Schematic Design Plan



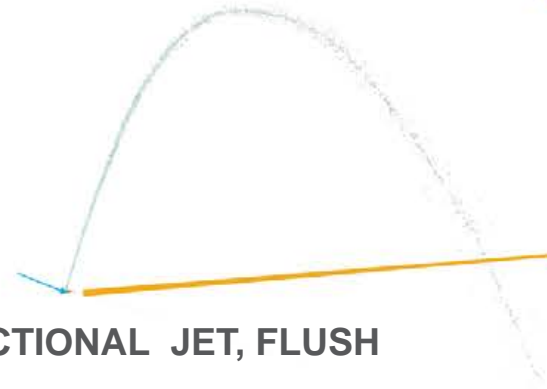








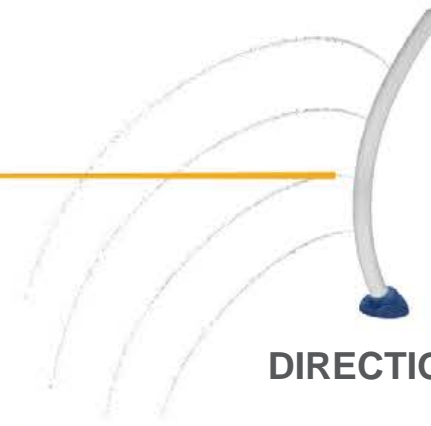
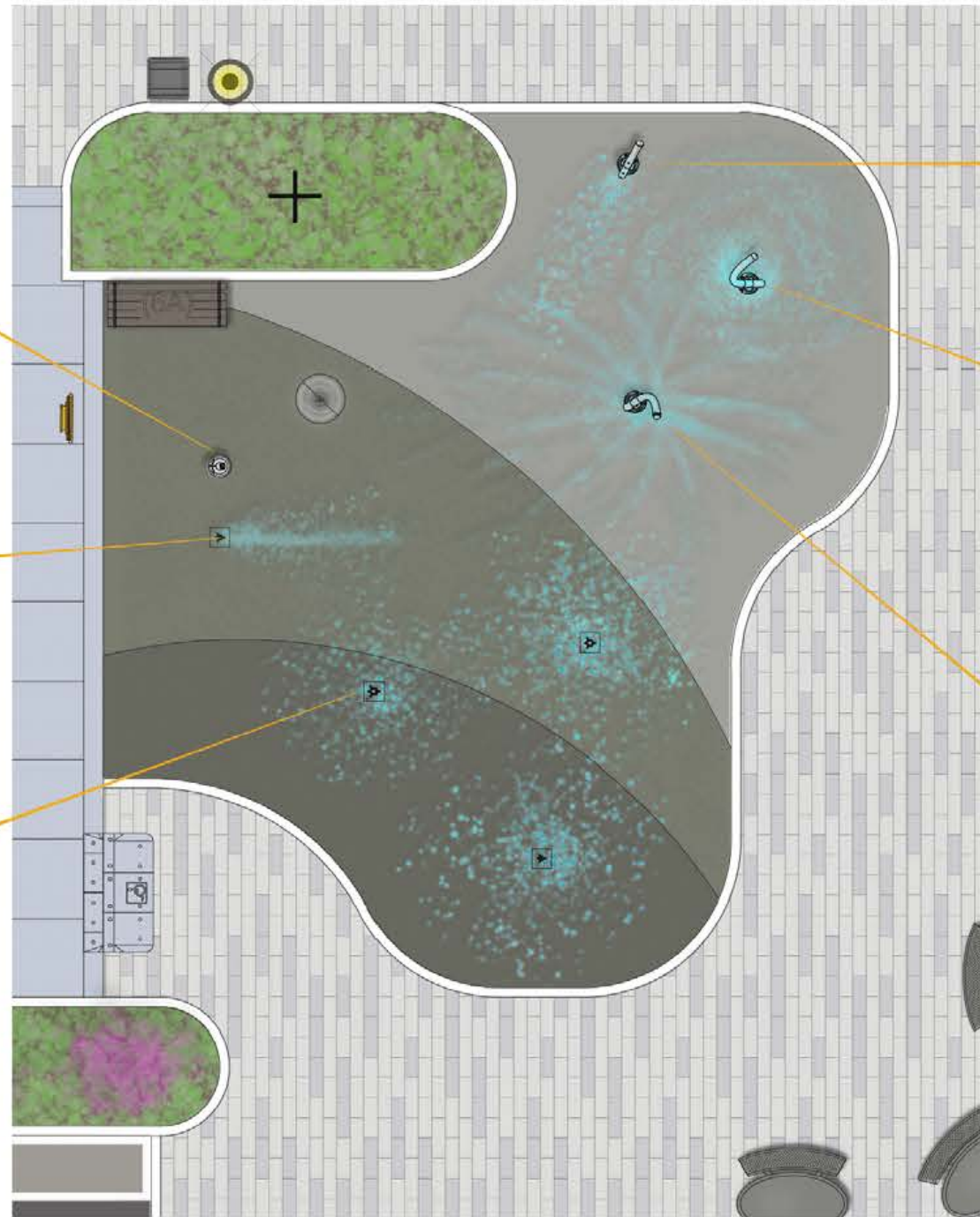
**ELECTRONIC
ACTIVATOR**



DIRECTIONAL JET, FLUSH



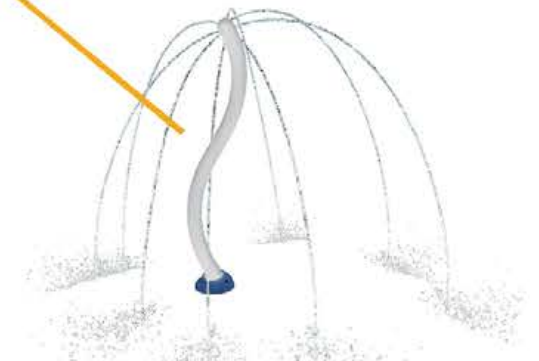
JET STREAM, FLUSH



DIRECTIONAL JETS, 6' HT.



MIST JETS, 9' HT.



UMBRELLA JETS, 7' HT.



DOT "RIVERSIDE PARK" STYLE LIGHTING



HI-LO DRINKING FOUNTAIN, TYPE 'F'
& BOTTLE FILLER



STEEL PICNIC TABLE



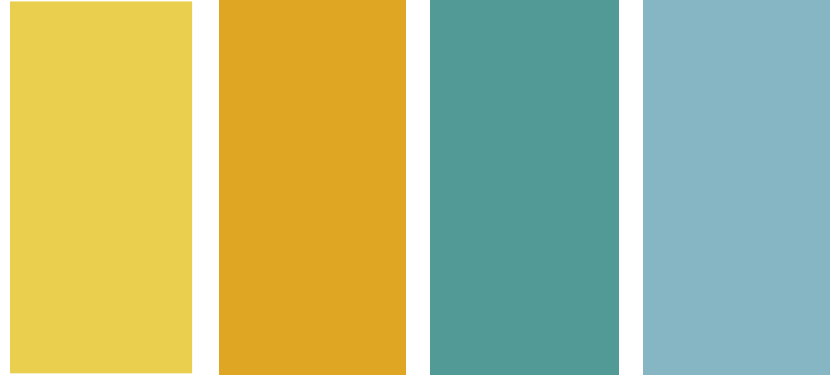
TYPE 'A' 1939 WORLD'S FAIR BENCH, KEBONY



TRASH COMPACTOR & BIN FOR RECYCLABLES



GRAY
RUBBER SAFETY SURFACE TILE (4' X 4')
FOR SWING AND PLAY EQUIPMENT AREAS



YELLOW TANGERINE PEACOCK SKY
STEEL PLAY EQUIPMENT

ADJACENT FORMS & MATERIALS



COOL GRAY FRENCH GRAY CHARCOAL
COLORED CONCRETE FOR SPRAY SHOWER



FOREST WINTER US OPEN BLUE STONE
ASPHALT PAVEMENT - COLOR SEALCOAT
FOR BIKE/SCOOTER TRACK



LIMESTONE NATURAL
CONCRETE PAVER (6" x 18")
FOR PATH AND SEATING AREAS

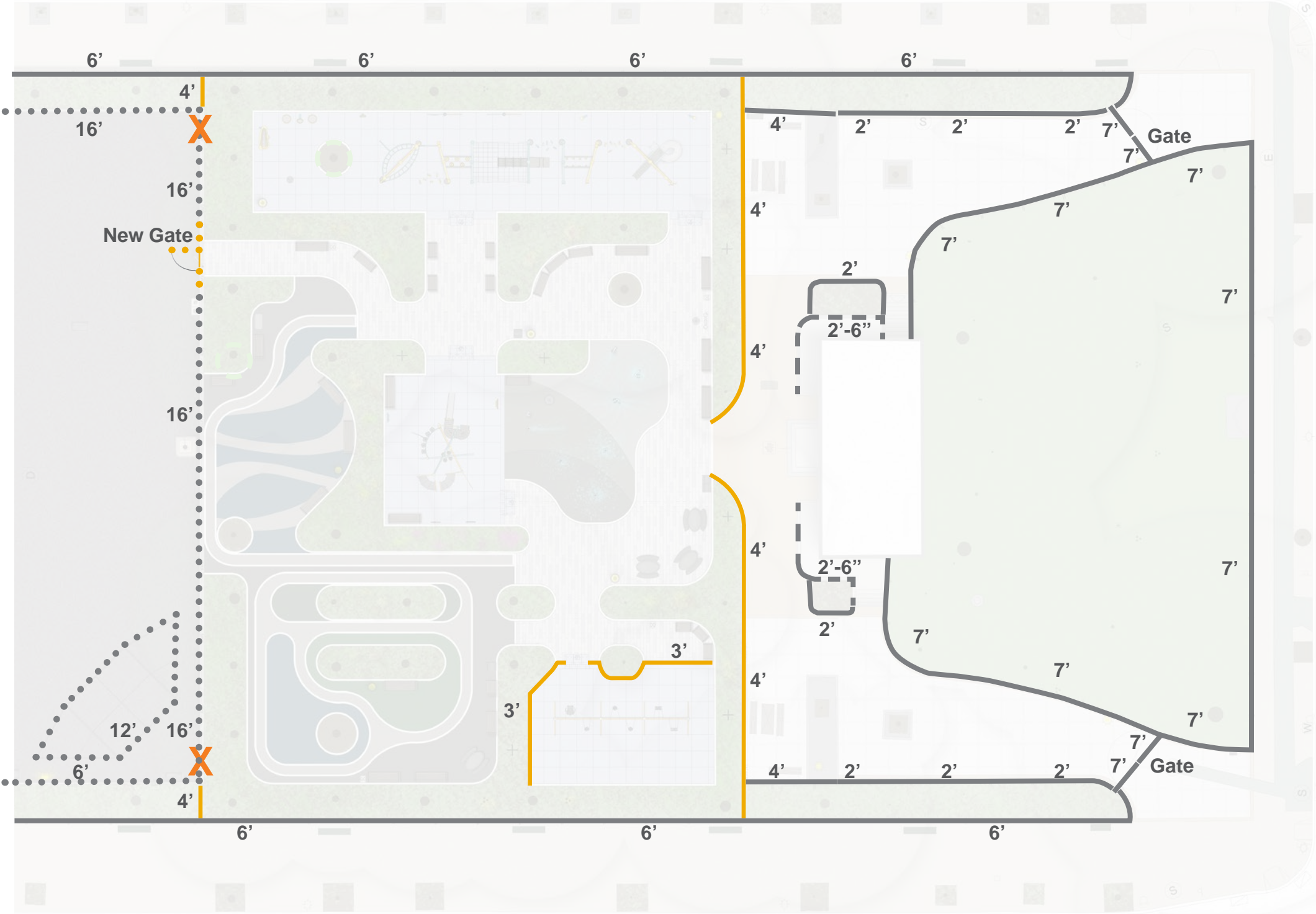


NYC Parks

ST VARTAN PARK | Materials

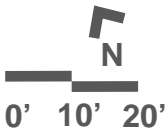
LEGEND

- EXISTING FENCES
- 6' to 15' CLF
- 4' to 7' STEEL
- 2'-6" PIPE
- TALL FENCE 8' - 16' HT.
- 8'-16' CLF
- MEDIUM / PERIMETER FENCES
- 3' to 4' STEEL PANEL
- REMOVE GATES
- CLF GATES REMOVED



ST VARTAN PARK | Fence Diagram

EAST 35TH STREET





Platanus acerifolia



Quercus rubra



Cornus florida



Amelanchier aborea



Polystichum setiferum



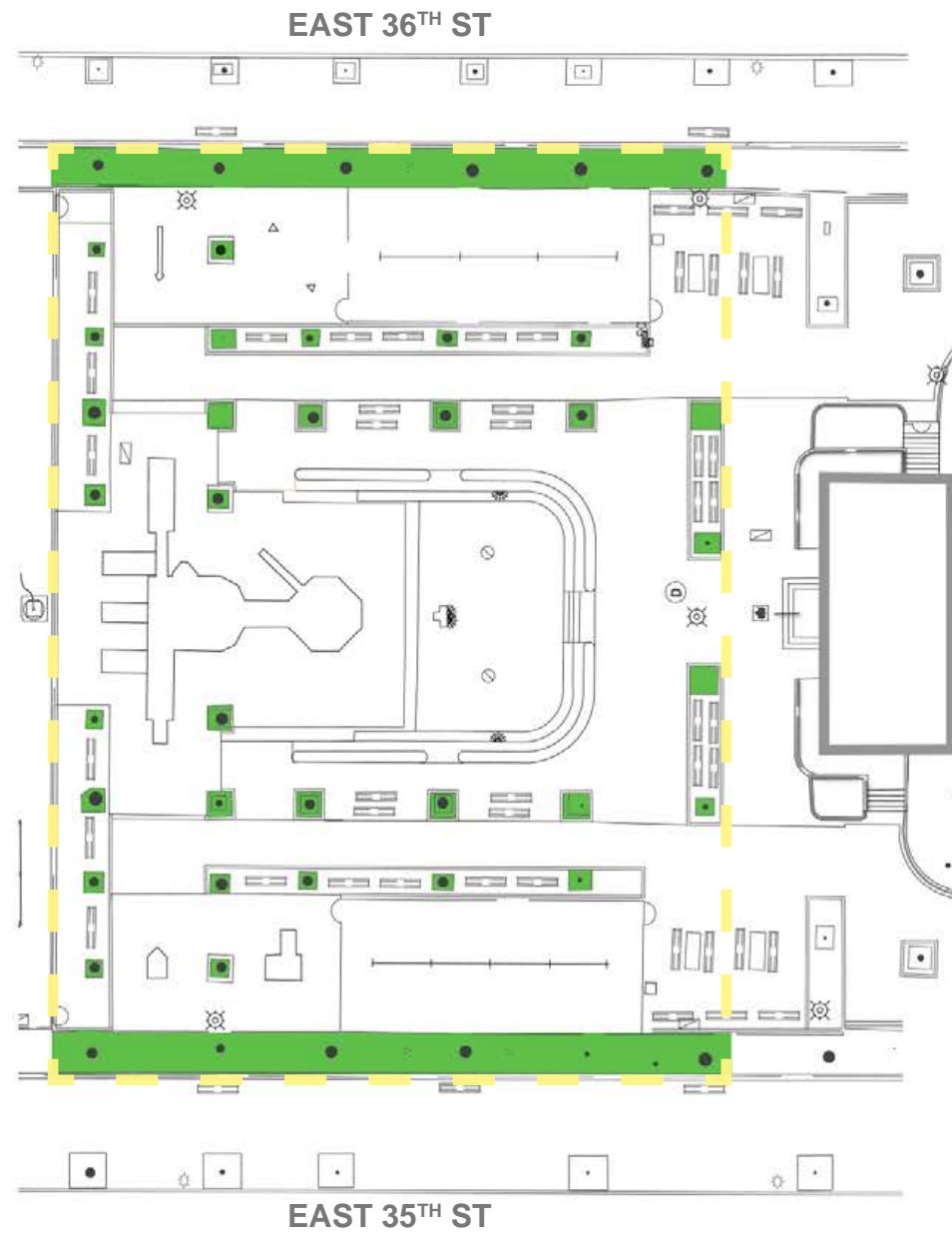
Limonium latifolium



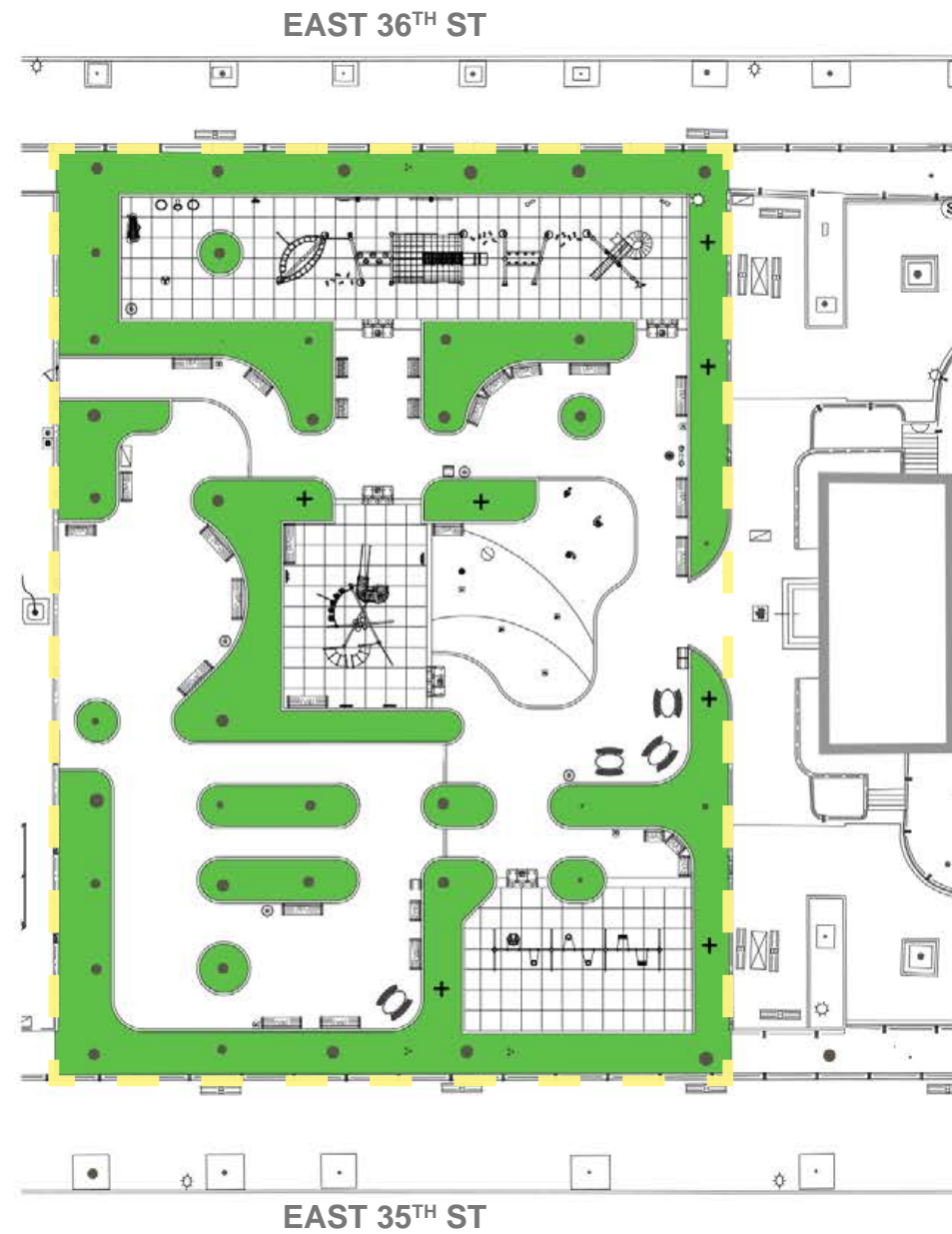
Euphorbia amygdaloides



Carex pensylvanica



Existing Permeability: 12%



Proposed Permeability: 32%

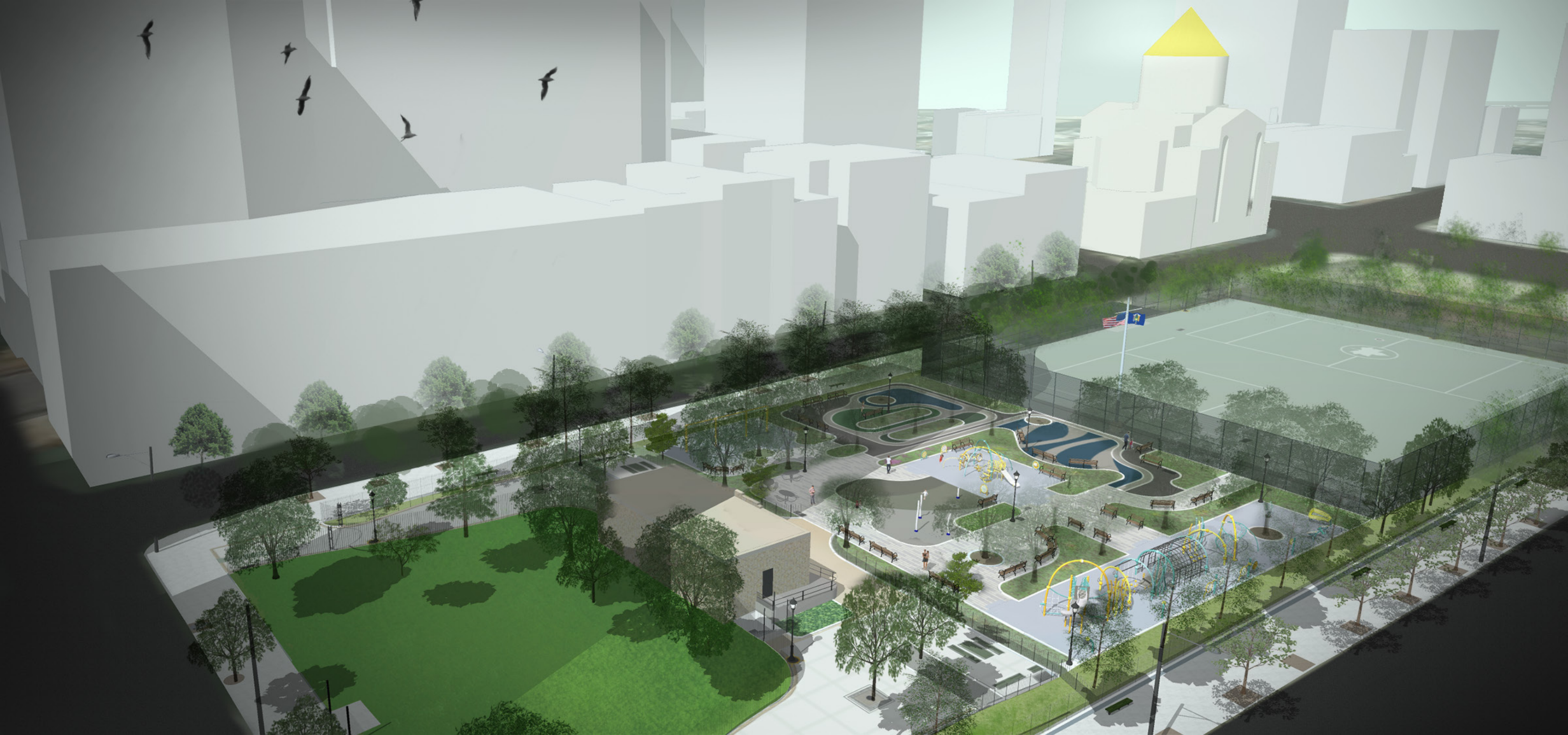
Legend



Sustainable Practices

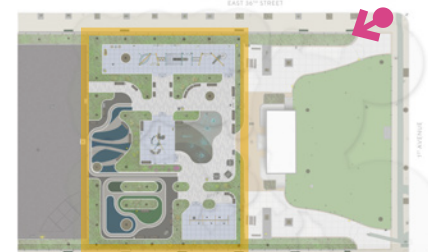
- Increase permeable surfaces
- Balance cut and fill
- Use recycled content material
- Improve tree health and growing conditions
- Use site appropriate resilient plant material





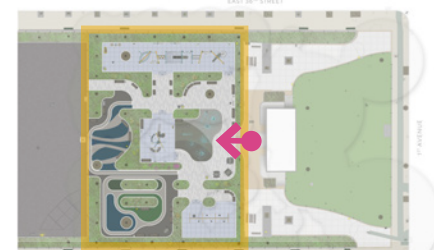
ST VARTAN PARK | Birdseye View Looking Southwest

N Key Map



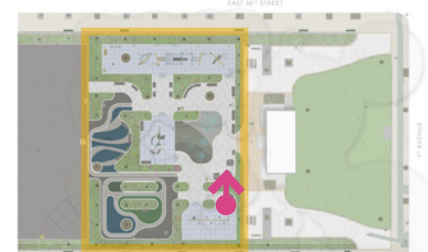


ST VARTAN PARK | View From Entrance



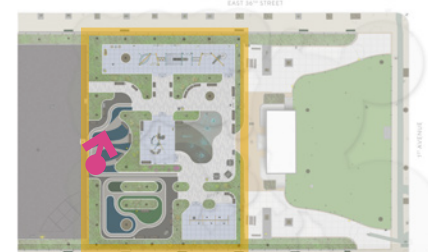


ST VARTAN PARK | View From Picnic Area



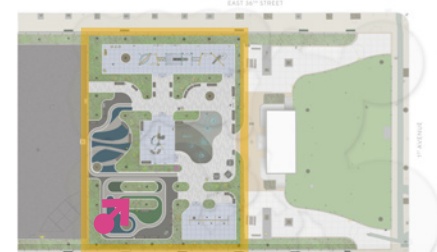


ST VARTAN PARK | View From Bike / Scooter Area





ST VARTAN PARK | View From Bike / Scooter Area



Play Area, Ages 5-12

Security Lighting

Entrance to MPPA

Bottle Filler

Seating Area

Play Area, Ages 2-5

Security Lighting

Bike/Scooter Track Area

Bike/Scooter Track Area

Security Lighting

Seating Area

Play Area, Ages 5-12

Plant Bed Buffer
w/ New Trees

Seating Area

Hi-Lo Drinking Fountain

Spray Shower

New Central Playground Entrance

Trash Compactor

Accessible Picnic Tables

Security Lighting

Seating Area

Swings, 7'-0"Ht
2 Strap, 3 Bucket, 1 Accessible Seat



ST VARTAN PARK | Schematic Design Plan

