



A community coalition united in demanding that the ESCR project reflect our needs and values while providing flood protection

Background



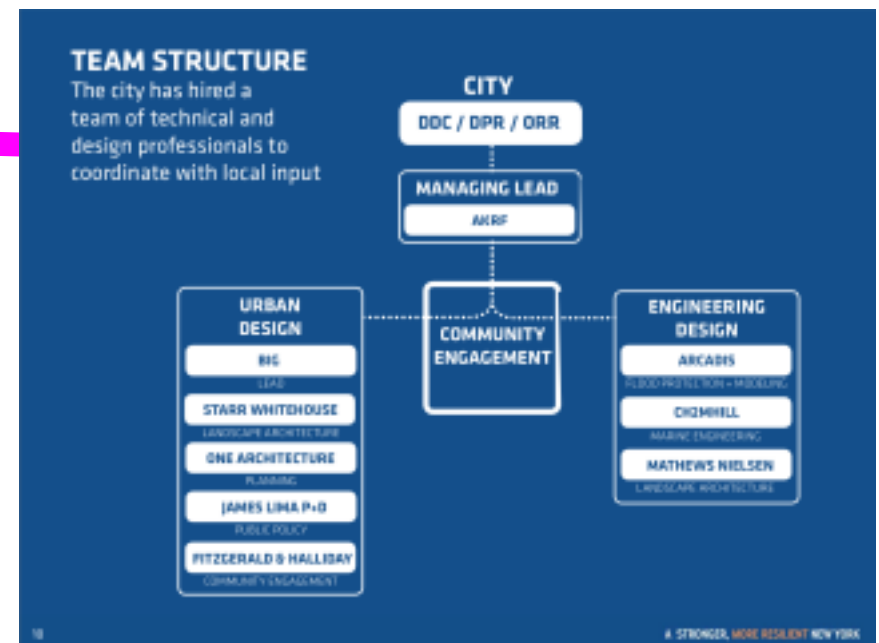
GOLES—Good Old Lower East Side—helped launch LES Ready!, the long term recovery group that formed in response to Sandy. Out of their grassroots organizing, the community was able to engage the Rebuild by Design process. Many other organizations contributed to the People's Plan and the Blueway plans for the East River waterfront even before Sandy.





The Rebuild by Design Big U plan was the basis for the East Side Coastal Resiliency project, and the plans for park-based flood protection were developed through collaboration between the city and communities in the ESCR area.

This slide from March 2015 outlines the central role of community engagement in the planning process.

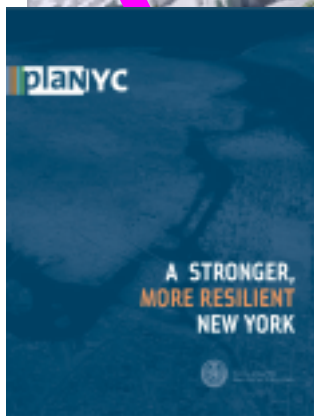




The city has produced multiple iterations of several planning studies and reports over years of planning for resilience on the east side of Manhattan.

The community identified a need for ongoing stewardship of the new ESCR parks.

The Building Bridges stewardship study recommended the formation of the East River Alliance.



October - December 2018

After announcing big changes to the East River Park plan, the City finally holds the first community engagement meetings since March in CB3 and CB6.



The East River Alliance formed, stepping into the role of engaging community when the City fell short in addressing concerns about the new plan. ERA has held over 25 meetings in the last 3 months.



Our position:

We want safe flood protection. Many of us live in Evacuation Zone 1 or very close to it.

We want a resilient coastline and parks that will adapt to a changing climate.

But we have concerns about this “preferred alternative plan,” and questions about the future use of these parks.



Our questions about the current plan:

Is this really the best flood protection option?

- How does it affect drainage? Will rainfall flood homes and businesses behind the new parks?
- How does it affect hydrology in the East River channel once it is effectively narrowed at flood stage by the new levy/parks? How does that change the flow of a storm surge?

Will our neighborhood be protected with deployable barriers as the mayor promised to the Two Bridges and Seaport districts?

- ERA demands parity in flood protection measures for our vulnerable neighborhood.



INTERIM FLOOD PROTECTION MEASURES (IFPM)



Climate Hazards: Current 10-year storm surge

Tools: Deployable Protection (HESCO Barriers, Tiger Dams, other "just in time" deployables)

Status: NYC Emergency Management (EM) does design and implementation

Our questions about the current plan:

How will the city be accountable for getting the project done quickly and with as little harm as possible?

- Will people, homes, and businesses be safe from storm surge flooding during construction?
- Will the parks and hundreds of thousands of yards of fill be kept safe from storm surge damage during construction?
- Will the air be clean during construction?
- Will we have real alternatives for healthy recreation and bridge habitat for wildlife that depend on these gardens?
- Will flood protection be in place and the parks returned to the community on the city's timelines?



What we're asking for:

CONSTRUCTION

- The constructability study that DDC asserts led to the change of design must be immediately made public.
- ERA strongly objects to entire parks being closed for the duration of construction. **Construction should be phased.**
- The City must provide the public with a construction plan and timeline.



Our questions about the current plan:

DESIGN CLARIFICATIONS

- Parallel conveyance - what is the capacity of this system?
- How will people on the outer side of the gates, such as at Waterside Plaza, be affected? Are the gates safe? Will there be a warning system before they are closed?
- Will the floodwall still bisect Asser Levy?
- Will there be updated designs for the Stuy Cove amphitheater?



Our questions about the current plan:

ENVIRONMENTAL CONCERNS

- How will natural shoreline areas at both East 6th St and Stuyvesant Cove be protected?
- What parts of the bulkhead in Project Area 2 will be rebuilt?
- How will the river be protected from Manufactured Gas Plant effluent?



What we're asking for:

MITIGATION

- At least five percent (5%) of the budget for the ESCR project must be dedicated towards the mitigation of the project's impact for the lifetime of the project.
- A Mitigation Task Force should be formed to coordinate a plan and provide oversight. The Task Force should be made up of community representatives and city agencies.
- Provide free transportation to alternative recreation areas.
- The **LES Greenway** should be rerouted around construction to provide a safe, uninterrupted corridor for cyclists, bike commuters, runners, and walkers. **Closing a lane of the FDR Drive** up to 18th Street should be fully explored.



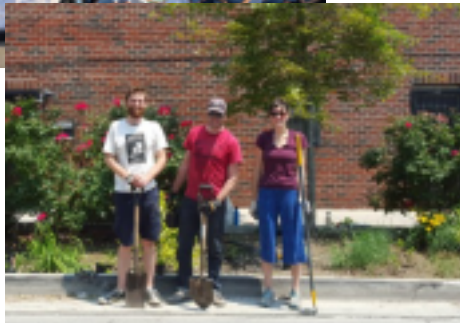
What we're asking for: UPLAND AREA IMPROVEMENTS

- Activate underutilized and unused spaces such as the parking pier at East 23rd Street, and the concrete waterside pier just north of Glick Park.
- Establish both pedestrian and play streets.
- Provide additional support for community gardens.
- Greenstreets program funding - install sustainable green infrastructure such as bioswales.
- Rescue and transfer plants from parks under construction to nearby green spaces including in NYCHA, community and school gardens, and parks.
- Solar One has a portable “Modular Edible Ecosystems” may be a model to use in gray spaces.



What we're asking for: PROGRAMMING

- Funding for parks department programming and increased maintenance
- Funding for community based organizations to run programming in areas such as environmental education, environmental justice, and stewardship of street trees and abandoned green spaces



Our questions about the future:

Will the new parks meet the needs of our community?

- Will youth leagues and local school teams have priority on the new ballfields?
- Will Murphy Brothers, Asser Levy, Stuy Cove, and Capt'n Paddy Brown Walk be planted with increased acreage of trees and plants that improve local air quality?
- Will the community have a strong voice in park management, including the Asser Levy facilities, Murphy Brothers Playground, East River Park amenities, and other facilities?





**Concerned about THE FUTURE
of East River Park
& beyond?**

Lend your voice.

**Join the
EAST RIVER ALLIANCE**

EAST RIVER ALLIANCE GENERAL MEETING
WEDNESDAY, MARCH 22ND
333 EAST 4TH STREET
6:30PM

 @eastriverallies / www.eastriveralliance.org /  @eastriveralliance

