

Infrastructure Upgrade Project: Murray Hill/Kips Bay Area

Project #MED607

The New York City Department of Design and Construction commenced the Infrastructure Upgrade along 2nd Ave. and Surrounding Areas Project, with an anticipated completion date of fall 2021. The new mains will ensure the proper delivery of services to the residents in the area. Having begun work on the east side of 2nd Ave. between 33rd St. and E. 34th St, the NYC Contractor, MFM, will be moving to the west side of 2nd Ave. between E. 32nd St. and E. 34th St. The contractor will continue excavating throughout the Murray Hill/Kips Bay project area installing and upgrading utility services and distribution water main throughout the Fall of 2018.

Completed:

Tree guards have been installed throughout first, second and 3rd Avenues between E. 33rd St. and E. 37th St. and on E. 33rd St. between 2nd and 3rd Avenues and on E. 35th St. between 1st Avenue and 3rd Avenues. New 12" distribution water main pipes have also been installed on the east side of 2nd Ave. between E. 33rd St. and E. 34th St. Water main installation operations are underway.

Upcoming:

Construction crews moved to the west side of 2nd Ave. between E. 32nd St. and E. 37th St. The city contractor set up the maintenance and protection of traffic at the above mentioned work location, excavated and started to install new 12"/20" distribution water mains. This process will continue throughout the footprint of the infrastructure upgrade project in the Murray Hill/Kips Bay area.

Special Needs

The DDC staff will work specifically with individuals that have special needs who may be uniquely impacted by the project. Please reach out to the project contact.

Community Impacts

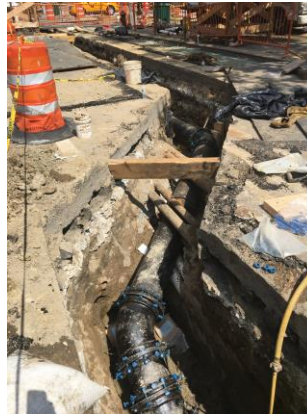
During construction hours, you can expect increased levels of dust, noise and heavy equipment. In addition, vehicular travel lane closures and detours may occur. Driveway and curbside parking may be restricted. Please note, signs will be posted and emergency vehicle/pedestrian/building access will be maintained at-all-times.

Trash Collection

Pack your trash properly to avoid breakage and/or spill over. Place it in the designated areas as close to collection time as possible. If you use a private carter, ensure your trash collection occurs in a timely fashion. If unsure where to bring your trash, please call the CCL.



Tree Guards Installed at various locations within the project



Installation of New 12" Water Main

Community Construction Liaison (CCL)

The DDC has assigned **Karen Flores**, as the Community Construction Liaison (CCL) for this project. Contact **Karen** for your project related inquiries/concerns.

Phone: 646-768-9105

Email: 2ndaveccl@gmail.com

Field Office: 300 E. 40th Street, New York, NY 10016

Newsletter Distribution

Construction Newsletters for this project are distributed within the work area & Manhattan's Community Board #6